



HOUSE PARTY SOLUTIONS



# Wardhill Castle

Aberdeenshire

SLEEPS 16



- ◆ A beautiful historic castle and estate is available for exclusive private hire.
- ◆ Sleeps 16 people in 8 traditionally decorated bedrooms.
- ◆ Surrounded by breath taking views of the Bennachie hill tops in the heart of Aberdeenshire.
- ◆ The Estate is only a short distance from Aberdeen airport.
- ◆ 400 acres of managed woodland to explore.
- ◆ Whisky trails, fine dining restaurants and world-class golf courses close by.







HOUSE PARTY SOLUTIONS

## Wardhill Castle



### OVERVIEW

Nestled within the picturesque landscapes of North-East Scotland, Wardhill Estate proudly stands as one of the region's oldest privately owned estates. Surrounded by breathtaking parkland, perfect for leisurely strolls, and tranquil ancient beech woodland, ideal for peaceful retreats, the estate offers a serene escape.

The stunning 12th-century castle, available for hire on a self-catered or catered basis, accommodates up to 16 guests in recently refurbished bedrooms featuring modern bathrooms and a state-of-the-art kitchen. Conveniently situated just a short distance from Aberdeen airport, Wardhill Estate provides seamless access to a myriad of local attractions.

Moreover, as the historical seat of Clan Leslie, the estate holds significant cultural significance, inviting guests to immerse themselves in its rich heritage and storied past. With nearby amenities including a world-class golf course, the renowned whisky trail, and a captivating array of castles awaiting exploration, Wardhill Estate promises an unforgettable Scottish experience.



HOUSE PARTY SOLUTIONS

## Wardhill Castle

### YOUR STAY

#### Accommodation & Gardens

Wardhill Castle, is a stunning and historic castle and estate available for exclusive private hire. It comfortably accommodates up to 16 guests in 8 classicly decorated bedrooms, each featuring a private bathroom. Housekeeping is included within the cost.

#### Stag & Hen Groups

- ◆ Not allowed

#### Number accommodated

- ◆ 16 guests

#### Bedroom & Bathroom configuration

- ◆ Spanish Bedroom: Continental king size with en suite bathroom
- ◆ Georgian Bedroom: Continental king size with shared bathroom featuring a free standing tub
- ◆ Turret Bedroom: Antique twin beds with a shared bathroom featuring a free standing tub
- ◆ Laird's Bedroom: King size four poster bed with an en suite bathroom with shower and freestanding tub
- ◆ Gold Room: King size bed with en suite shower room
- ◆ Garden Room: King size bed with en suite shower room
- ◆ Green Room: King size bed with free standing roll top bath and basin in the bedroom plus a shared bathroom
- ◆ Yellow Room: Antique twin beds with shared bathroom

#### Dining Capacity

- ◆ 16 can be seated in the dining room

#### Catering

- ◆ Self-catering
- ◆ An in-house chef can be arranged at an additional cost

#### Check in/out times

- ◆ Check in from 5 pm
- ◆ Check out by 10 am

#### Pets

- ◆ Dogs allowed

#### Weddings

- ◆ Not available to hire for civil ceremony weddings

#### Disabled Facilities

- ◆ Due to the age of the house there are any disability facilities



HOUSE PARTY SOLUTIONS

## Wardhill Castle

### ACTIVITIES

#### On-Site Activities

- ◆ Ping Pong Table
- ◆ Outside terrace with BBQ
- ◆ Library

?The following activities can be arranged at an extra charge:

- ◆ Butler (£240 per day)
- ◆ Bagpiper
- ◆ Clay pigeon shooting
- ◆ Quad biking
- ◆ Mini highland games
- ◆ Game shooting
- ◆ Fishing
- ◆ Hunting
- ◆ Glamping

#### Local Attractions

- ◆ Whisky Trails: An iconic whiskey trail that runs from distillery to distillery up to Spey River is unique globally and boasts some of the finest whisky distilleries on earth.
- ◆ Golf: Aberdeenshire is golfers paradise. With over 50 courses to play in the region, it boasts some of the best golf courses in the world. Royal Aberdeen Golf, Trump Golf Scotland, Cruden Bay Golf Club, Oldmeldrum Golf Club and Insh Golf Club are in easy reach from the estate.
- ◆ Balmedie Country Park is situated on the coast, around a 40 minute drive from Wardhill Castle. It's made up of beach, sand dunes, heath land, and wooded areas and is connected by a series of paths and boardwalks.
- ◆ Restaurants: This part of Scotland has some of the finest produce in terms of beef, pork and fish. There are some fabulous local eateries to try out when you visit Wardhill Castle.







HOUSE PARTY SOLUTIONS

## Wardhill Castle

### LOCATION

Nestled amidst the serene landscapes of North-East Scotland, Wardhill Castle stands as an iconic landmark steeped in history and surrounded by natural beauty. Located within the picturesque Wardhill Estate, the castle enjoys a tranquil setting amidst lush parkland, offering scenic walks and opportunities for exploration.

Situated just a short distance from Aberdeen airport, accessibility to this historic gem is effortless, welcoming travellers from near and far. Beyond its immediate surroundings, Wardhill Castle serves as an ideal base for exploring the rich cultural heritage of Scotland.



### Distance from

- ◆ Aberdeen - 25 minutes / 21 miles
- ◆ Perth - 2 hours / 100 miles
- ◆ Edinburgh - 2 hours 50 minutes / 147 miles
- ◆ Glasgow - 3 hours 20 minutes / 178 miles
- ◆ Manchester - 6 hours 25 minutes / 376 miles
- ◆ London - 10 hours / 567 miles

### Nearest airport

- ◆ Aberdeen Airport - 25 minutes

Airport and helicopter transfers can be arranged at an additional cost

### Nearest train station

- ◆ Inverurie - 6.9 miles

### Distance to village/town

- ◆ Inverurie - 10 minutes / 2 miles





HOUSE PARTY SOLUTIONS

## Wardhill Castle



### PRICES

2024 & 2025

#### Weekend

- ◆ Minimum 3 nights: £10,200

#### Weekly

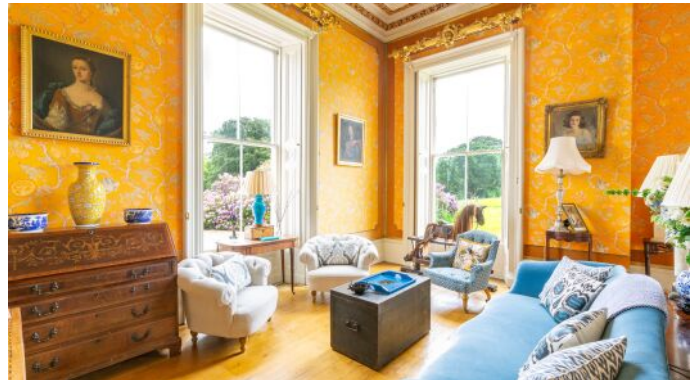
- ◆ Weekly price: £12,600

#### Christmas & New Year

- ◆ Minimum 3 nights: £13,800

#### Booking Terms

- ◆ 50% deposit required to secure booking
- ◆ Remainder of balance required 1 month prior to arrival
- ◆ Damages deposit of £1,000







HOUSE PARTY SOLUTIONS

## Wardhill Castle

