



HOUSE PARTY SOLUTIONS



# Tudor Barn

Somerset

SLEEPS 10-14



- ◆ 13th century thatched barn with a gorgeous beamed ceiling
- ◆ Breath-taking interiors with a very boutique feel and style
- ◆ Terrace overlooking a lake and gardens
- ◆ Open plan living and dining area, leading into the modern kitchen and ground floor bedrooms
- ◆ Further accommodation on site for larger parties or families
- ◆ Bose music system throughout
- ◆ Direct commuting routes from London







HOUSE PARTY SOLUTIONS

## Tudor Barn



### OVERVIEW

The Tudor Barn is a charming thatched building dating from the 13th century situated in an area of Outstanding Natural Beauty on the Somerset/Devon boarder. It has been lovingly restored in a contemporary style with all of today's latest mod cons. The Barn consists of six bedrooms (three en-suite) and a separate bathroom; a fully equipped kitchen and amazing open-plan living and dining areas. Luxury is key at the Barn and every room is equipped with fluffy towels, quality toiletries and bathrobes along with chic furnishings and cool lighting.

The Tudor Barn is perfect for smaller parties and can also be hired in conjunction with [The Mill House](#) and even [The Medieval Manor](#) for those larger gatherings, events or celebrations!



HOUSE PARTY SOLUTIONS

## Tudor Barn

### YOUR STAY

#### Number accommodated

- ◆ Sleeping 12 - 14 guests across 6 bedrooms

#### Bedroom & bathroom configuration

- ◆ Bedroom 1 - 1x Super King bed with en-suite
- ◆ Bedroom 2 - 1x double bed with shared bathroom
- ◆ Bedroom 3 - 2x single beds with en-suite
- ◆ Bedroom 4 - 1x double bed with shared bathroom
- ◆ Bedroom 5 mezzanine - 1x Super King bed with en-suite
- ◆ Bedroom 6 - 1x Super King bed with 2x futon sofa beds

#### Dining capacity

- ◆ Dining room - 12 guests
- ◆ Kitchen - 4 guests

#### Catering

- ◆ Hired on a self catered basis
- ◆ In house catering can be provided and highly recommended, we can look into as much or as little as required - a sit down catered meal for perhaps a Saturday night is always a lovely addition to any weekend stay

#### Facilities

- ◆ Football table
- ◆ Music system throughout
- ◆ Wi-Fi
- ◆ Large satellite TV
- ◆ Large open plan spaces for entertaining, with comfy sofas suitable for everyone to relax and unwind
- ◆ Tennis court can be offered subject to availability

#### Check in / out times

- ◆ Check in - 4pm
- ◆ Check out - 12pm
- ◆ Flexible check in and out times, confirmed by the owners and clients prior to booking

#### Pets

- ◆ Welcome by prior arrangement

#### Stag & Hen parties

- ◆ Both Stag & Hen parties welcome
- ◆ The owners have fabulous packages for stag and hen groups, suitable for 1 or 2 night stays and can include additions such as catering or activities



HOUSE PARTY SOLUTIONS

## Tudor Barn

### ACTIVITIES

#### On-site activities

- ◆ Archery, laser and clay pigeon shoots can be provided on-site
- ◆ Tennis court - subject to availability
- ◆ Football table

#### Local activities

- ◆ Experience how local Somerset cider is made at Sheppy's Cider Museum in Taunton
- ◆ The romantic gardens at Cothay Manor in Wellington
- ◆ Visit the farmers market at Wellington
- ◆ Shopping in Taunton or Exeter
- ◆ Sandy Park rugby stadium, home of the Exeter Chiefs
- ◆ Immerse yourself in local country pursuits such as fishing, shooting and horse riding







HOUSE PARTY SOLUTIONS

## Tudor Barn

### LOCATION

#### Distance from

- ◆ London - 3 hours / 170 miles
- ◆ Bristol - 1 hour / 50 miles
- ◆ Cardiff - 1 hour 30 minutes / 85 miles
- ◆ Birmingham - 2 hours 20 minutes / 145 miles

#### Nearest airport

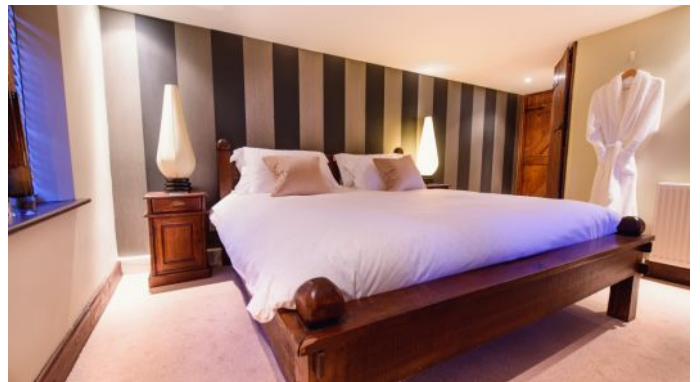
- ◆ Exeter - 25 minutes / 25 miles
- ◆ Bristol - 50 minutes / 40 miles

#### Nearest train station

- ◆ Taunton - 15 minutes / 10 miles

#### Distance to town / village

- ◆ Taunton - 15 minutes / 7 miles
- ◆ Wellington - 5 minutes / 2 miles





HOUSE PARTY SOLUTIONS

## Tudor Barn



### PRICES

2024 The below information is based on up to 14 guests, should your group increase we could offer further accommodation on-site. Please view the Mill House for more information.

#### Weekend

- ◆ Weekends are priced from £3,500
- ◆ Please enquire for confirmed pricing based on group size and time of year

#### Midweek

- ◆ Please enquire

#### Weekly

- ◆ Please enquire

#### Christmas & New Year

- ◆ Christmas - from £6,500
- ◆ New Year - from £6,500
- ◆ Please enquire for confirmed pricing based on your desired duration

### Booking terms

- ◆ 50% deposit required to secure your dates
- ◆ The remaining balance is then required 12 weeks prior to arrival
- ◆ Damages deposit of £1,000 (£1,500 for Stag & Hen bookings)

