



HOUSE PARTY SOLUTIONS



Tidswell Court

Devon

SLEEPS 42-100



- ◆ Sleeping up to 100 guests across 21 - 42 luxury bedrooms & suites
- ◆ Situated within the beautiful rolling Devon countryside on the borders of the Exmoor National Park and close to Somerset
- ◆ Less than 2 hours from London by train and 15 minutes from the M5
- ◆ Offering a unique option to stay on a dry-hire basis, allowing guests the flexibility to cater for themselves or to choose from the network of caterers and supplier
- ◆ Banqueting spaces for groups of up to 130 guests
- ◆ Baronial country house events and wedding venue, licensed for civil ceremonies within the House, grounds or nearby churches



HOUSE PARTY SOLUTIONS

Tidswell Court



OVERVIEW

Tidswell Court is a beautiful, historic Devon Country House, offering clients complete flexibility and exclusivity within a stunning Baronial Mansion. It is set in the idyllic Devon countryside with glorious views.

The gorgeous interiors offer more than enough Downton-esque glamour to satisfy the most sophisticated of guests, with ample space to throw a lavish party, whilst maintaining a real home-from-home feel, albeit on a very large and grand scale! The elegant reception rooms offer dining for up to 130 guests, versatile spaces for dancing, casinos, relaxing and a dedicated bar space to help the celebrations along.

The 21 (minimum) 42 (maximum) bedrooms are all beautifully furnished, many with large en-suite bathrooms and the spectacular staircase alone, will make you feel like you are Lord or Lady of the Manor.

Specialising in weekend or extended weddings and events, the venue offers complete flexibility in catering, drink and on the day timings, coupled with complete privacy, beautiful grounds and excellent accessibility just 15 minutes from the M5 and 2 hours from Paddington by train.

This is the ultimate country house experience for an elegant wedding, corporate event, decadent party or a relaxed-vibe celebration, where everybody can be under one roof.

Tidswell Court is situated on 5.5 incredibly photogenic acres of beautiful, rolling Devon countryside. The house has 42 large bedrooms and suites, sleeping up to 100 guests and it can hold events for up to 130 people. It's licensed to hold civil ceremonies inside and out. Couples can also marry in the pretty All Saints Church, a short walk down the drive or in the beautiful grounds.

The team are there to share the house's luxury and do as little or as much as you wish, whilst you spend time with your nearest and dearest in complete privacy and glamour. They go above and beyond to help you make your wedding or event a reality and offer complete flexibility, even down to moving the furniture! Couples can marry in the dining room, have dinner in the drawing room and then dance the night away in the hall if they so wish. The house is rented on a self-catered basis however, a great network of suppliers, housekeepers and butlers are available if required, to make your dream a reality.



HOUSE PARTY SOLUTIONS

Tidswell Court

YOUR STAY

Number accommodated

- ◆ Flexible accommodation for up to 100 guests across 21-42 luxurious bedrooms & suites
- ◆ Certain bedrooms can also be converted (prior to arrival) into spa rooms or playrooms for children

Bedroom & bathroom configuration

- ◆ Across the 42 bedrooms & suites the house can sleep up to 100 guests
- ◆ Some bedrooms & suites also interlink to create family suites and most of those in the main house, have a lounge area
- ◆ All bedrooms & suites are presented for your arrival with crisp, laundered white linen and bathrooms come with complimentary toiletries and fluffy towels

Dining capacity & information

- ◆ Internal banqueting furniture, linens, crockery and cutlery all included
- ◆ Dining internally for up to 130 guests
- ◆ External dining for large groups however, marquees are not permitted

Catering

- ◆ Hired on a dry hire basis with the flexibility to cater for yourselves, this way you have the freedom to bring your own suppliers or drinks with no extra charges or corkage
- ◆ Guests also have the option to use their recommended network of caterers and suppliers, if you wish
- ◆ Food trucks and other festival style food and beverage companies welcome on-site

Facilities

- ◆ Bar - no corkage
- ◆ Late licence
- ◆ 7 hours event planning included (more available by agreement directly with planners)
- ◆ Full banqueting set included
- ◆ Dry hire / supplier packages
- ◆ Church within the grounds
- ◆ Indoor & outdoor wedding license
- ◆ 5.5 acres of private gardens & grounds
- ◆ 4 large and flexible reception rooms can be set up as you wish for dining, lounging and ceremonies or emptied for meetings, receptions and dancing the night away
- ◆ Super Fast 100MB broadband internet
- ◆ Event staff, housekeeping and butler service by arrangement

Weddings

Most notably, Tidswell Court is a stunning Baronial country house wedding and events venue. What's more, it's situated in the beautiful rolling Devon countryside on the borders of the Exmoor National Park, close to the Somerset border. Couples can enjoy the exclusivity of hiring a private, country estate, sleeping up to 100 people across 42 luxury bedrooms & suites. There are no corkage charges and no hidden fees. Most importantly, the Court can host events for up to 130 guests and is under 2 hours by train from Paddington and just 15 minutes off the M5.

The Country House Wedding Breakfast

- ◆ With banqueting spaces for groups up to 130 people you can choose to bring your own caterers or use their network of recommended caterers
- ◆ A country house wedding venue with huge flexibility and no corkage!

Country House Wedding Ceremonies

- ◆ At Tidswell Court you can host the type and style of ceremony to suit you; civil or humanist ceremonies in one of the state rooms or under the ancient dovecot in the garden or for religious ceremonies & blessing, there are several local churches.



HOUSE PARTY SOLUTIONS

Tidswell Court

YOUR STAY (cont.)

Corporate Events

- ◆ For single occupancy, there is the option to hire the minimum 21 bedrooms or up to 42 bedrooms
- ◆ Meeting and dining capacity for up to 130 people
- ◆ Furniture can be moved to allow for meetings in whatever style you wish
- ◆ Plenty of break-out rooms
- ◆ 5.5 acres of grounds, ideal for team building exercises and activities
- ◆ Exclusive Use of the whole Estate to ensure complete privacy and focus
- ◆ A network of recommended caterers can be recommended to provide all of your catering requirements and corkage is not charged!
- ◆ 7 hours of events planning, included in the price
- ◆ Situated just 2 hours from Paddington by train and 15 minutes from the M5
- ◆ Flexible check in/out times by arrangement
- ◆ Mid-week day hire possible by arrangement - depending on season and availability

Disabled facilities

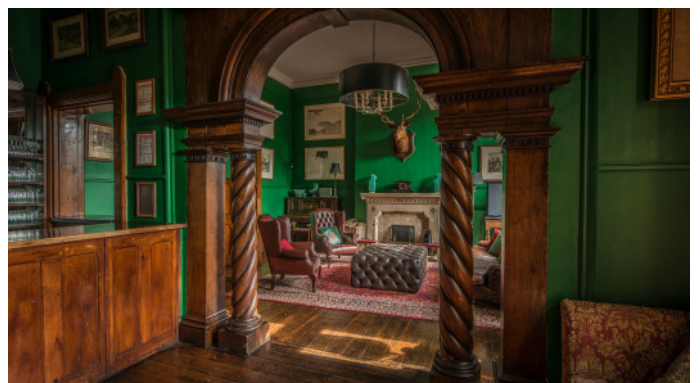
- ◆ Ground floor facilities and very well suited to those with limited mobility
- ◆ 1 dedicated disabled bedroom with en-suite and disability alarm
- ◆ 4 further ground floor bedrooms with low threshold showers

Check in / out times

- ◆ Check in from 4pm
- ◆ Check out by 11am
- ◆ These time can be made earlier or later by prior arrangement

Pets

- ◆ Pets welcome by prior arrangement





HOUSE PARTY SOLUTIONS

Tidswell Court

ACTIVITIES

Many sports and athletic activities can be done at or near Tidswell Court at times to suit your schedule, both indoor and outdoor. All of these activities can be tailored to you: your group size, timings, and they can be all day or a short sessions. Activities include:

- ◆ Activities for small groups: Horse riding, Croquet, Wine tasting, Falconry displays and Indoor games (backgammon, chess, cards and board games).
- ◆ Activities for large groups: Fencing, Archery, Pistol Shooting, Laser Clay, Murder Mystery, Bouncy Castle, Giant Party Games, Helicopter tours, Casino Nights and so much more.

Things to do near Tidswell Court - nestled in the heart of the British countryside on the Devon Somerset border within easy reach of the coasts and a wealth of rural pursuits. These are some nearby activities other guests have enjoyed:

- ◆ Kayaking and outdoors activities
- ◆ Rowing, horse drawn barge trips & canoeing
- ◆ Land Rover experience
- ◆ Quad biking
- ◆ Paintballing
- ◆ Local vineyard wine tasting
- ◆ Lake fishing
- ◆ Hot air balloons
- ◆ Exmoor safari
- ◆ Watersports and waterparks
- ◆ Diggerland
- ◆ Exmoor Zoo





HOUSE PARTY SOLUTIONS

Tidswell Court

LOCATION

Nestled in the green rolling hills of the Devon countryside, our private hire country estate is, incredibly, less than 2hrs by train from London. Surrounded by fields in all directions, guests have private use of 5 acres of glorious gardens and the main house. Additionally the village church sits on the driveway just 800 yards away. Privacy and space to enjoy with your friends and family.

This Exclusive Use Country House sits in spectacular rolling countryside on the Devon/Somerset Borders and within striking distance of regional commercial centres making us an excellent exclusive use country house party venue or Devon wedding venue near Exeter, Taunton and Bristol and well known tourist destinations including Barnstaple, Croyde, Woolacombe and Ilfracombe on the North Coast and Sidmouth, Exmouth, Teignmouth, Torquay and Paignton to the South. The House is also situated on the edge of Exmoor National Park and is an easy drive to Dartmoor.

Although just 12 minutes from the motorway and Tiverton Parkway Station the property is privately nestled in rolling countryside without any noise pollution

Distance from

- ◆ London - 3 hours 35 minutes / 170 miles (1hr 55 minutes by train to Paddington)
- ◆ Bristol - 1 hour 30 minutes / 67 miles (55 minutes by train)
- ◆ Birmingham - 2 hours 40 minutes / 157 miles
- ◆ Manchester - 4 hours 5 minutes / 227 miles

Nearest airport

- ◆ Exeter airport - 30 minutes / 23 miles
- ◆ Bristol airport - 50 minutes / 54 miles
- ◆ Helicopters can also land on site (by prior arrangement and weather permitting) and there is a private airstrip three miles away where we can arrange light aircraft landing and parking if needed.

Nearest train station

- ◆ Tiverton Parkway is a mainline rail station situated right next to Jnc 27 of the M5 and is also a twelve minute drive to the House. It has excellent regional connections as well as a 2hr London express service.





HOUSE PARTY SOLUTIONS

Tidswell Court



PRICES

Exclusive use

At Tidswell Court their private exclusive use takeover prices include all the essentials you need you need for a 2 night celebration: table linen, banqueting furniture, crockery, glassware, candlesticks, vases & all included in the price. All you need to do is decide whether to bring your own caterers and alcohol or use their catering partners and alcohol suppliers. Simple prices. No hidden costs. No kitchen or storage fees. No extra guest charges. Minimum 21 Bedrooms for 2 night stays.

Weekend

- ◆ A weekend 2 night stay starts at £11,303 based on 21 bedrooms, up to £27,780 for 42 bedrooms. Please enquire for rates based on your dates, the number of nights and bedrooms required

Midweek

- ◆ A midweek 2 night stay starts at £11,303 based on 21 bedrooms, up to £24,381 for 42 bedrooms. Please enquire for rates based on your dates, the number of nights and bedrooms required
- ◆ A minimum 2 night stay, is generally in place. Please ask for day rates and 1 night stays as this might be considered on request - subject to season and availability

Other on-site accommodation

For larger groups, there are a total of 42 bedrooms, sleeping up to 100 guests. Extra accommodation 'blocks' can be added to the main 21 bedrooms:

- ◆ Atrium Bedrooms - Sleeps 22 guests in 8 bedrooms
- ◆ Garden Wing - Sleeps 10 guests in 5 bedrooms
- ◆ Little Lodge - Sleeps 10 guests in 5 bedrooms
- ◆ Gatehouse Lodge - Sleeps 6 in 3 bedrooms

Prices include

- ◆ VAT
- ◆ 7 hours of planning with a member of the Events Team
- ◆ Exclusive use of the house and grounds
- ◆ Complimentary use of banqueting crockery, cutlery, glassware, tables, chairs and one massive set of table linen included
- ◆ Round or trestle tables and banqueting chairs
- ◆ No corkage charges
- ◆ Day Hire - when available, includes: Exclusive use of the ground floor of the house, 3 ground floor bedrooms and grounds from 10am until Midnight



HOUSE PARTY SOLUTIONS

Tidswell Court

Booking terms

- ◆ 25% initial deposit required to secure any booking
- ◆ Please request payment terms as they can vary depending on the length of stay, type of event/occasion and number of guests / bedrooms booked





HOUSE PARTY SOLUTIONS

Tidswell Court

