



HOUSE PARTY SOLUTIONS



The Medieval Somerset Estate

Somerset

SLEEPS 24 - 42



- ◆ Stunning estate in the heart of Somerset for large groups and milestone celebrations
- ◆ Steeped in 750 years of history and one of England's finest examples of Medieval architecture
- ◆ The Flagship Manor sleeping 24 with two smaller luxury Barns boosting the accommodation to 40+
- ◆ Outdoor heated swimming pool, tennis court, sauna, games room and hot tub
- ◆ On-site activities booked with ease and including options such as archery, lazer clays etc
- ◆ Can be offered at a fully catered package with dining in the Manors grand hall, or simply a banquet for the main day
- ◆ Disabled bedroom and wet room in the Manor
- ◆ Hen and Stag parties always welcome
- ◆ Only 30 minutes from Exeter airport
- ◆ 1hr 40 minutes from London by train



HOUSE PARTY SOLUTIONS

The Medieval Somerset Estate



OVERVIEW

The Medieval Somerset Estate, gardens and surroundings are by far the most tranquil and exclusive collection of bespoke luxury properties on offer for large family groups, corporate events, stag weekends and hen party celebrations. The estate itself is nestled within seven acres and boasts beautiful features throughout, but to name a few - a typically English miniature lake, rose garden a Koi pond and gardens impeccably presented and described as some of the finest found alongside a county Manor.

The grounds can be used to their full advantage and with a plethora of activities easily achieved makes it hugely productive for corporate and team building events or just a hoot for stags and hens. Other more relaxed weekends and breaks may wish to take full advantage of the vast amount of facilities situated within the estate and offered exclusively for all guests taking occupancy. The facilities on offer consist of a tennis court, hot tub, games room, heated outdoor swimming pool and sauna.

A note from the owners:

Totally exclusive and private, our estate is one of England's finest examples of medieval architecture. The Manor and Barns will enable you and your guests to feel totally relaxed and revitalized, providing you with the space to enjoy each others company.

"We specialize in offering our guests the flexibility of a self catered or fully bespoke stay. You set our standards and nothing is too much trouble. Explore the grounds or simply sit by the Koi Pond for lunch; play tennis or swim. Maybe you'll use the sauna, prior to having a candle-lit dinner in our 13th century banqueting hall or perhaps you'll choose to dine under the ancient pagoda in our rose garden".



HOUSE PARTY SOLUTIONS

The Medieval Somerset Estate

YOUR STAY

Number Accommodated

- ◆ The Manor - 24 guests
- ◆ The Tudor Barn - 10 guests (a few extra put up beds can be provided)
- ◆ The Mill House - 8 guests (a few extra put up beds can be provided)

Number of Bedrooms

- ◆ The Manor - 11 luxurious bedrooms
- ◆ The Tudor Barn - 6 bedrooms
- ◆ The Mill House - 4 double bedrooms

Bedroom and Bathroom configuration

Manor?

- ◆ Knights Quarters: family suite with 2 bedrooms - Knights 1: King-size or twin (zip & link). Knights 2: King-size or twin (zip & link) plus 2x single beds. En-suite bathroom and separate en-suite with roll top hip bath.
- ◆ Old Nursery Room: King-size bed or twin (zip & link) with shower room across landing.
- ◆ Charles Room: King-size or twin (zip & link) , sharing shower room with Old Nursery, has own WC.
- ◆ The Lord's Suite: Super-king four poster bed with large en-suite bathroom and bath (bridal suite), also has single shower room or dresser.
- ◆ Ship Room: King-size or twin(zip & link) with shower room and wc on the landing.
- ◆ Countess Weir Room: King-size or twin (zip & link), sharing shower room and wc with Ship room.
- ◆ Duke of Wellington Suite: Super-king four poster bed with large en-suite bathroom with claw foot bath. Sofa bed if needed.
- ◆ Study: Ground floor king-size or twin room (zip & link), using shower room in poll room .
- ◆ West Wing 1: King-size bed with en-suite shower room .
- ◆ West Wing 2: King-size or twin (zip & link) with en-suite bathroom; shower over bath.

The Tudor Barn

- ◆ Ground floor - Four double bedrooms, 2x en-suite with 2 sharing bathroom. Plus Super king wrought iron bed sharing bathroom with mezzanine floor bedroom.
- ◆ Mezzanine floor - One double en-suite bedroom.

The Mill House

- ◆ Ground floor - One double bedroom (zip & link) with en-suite, shower over bath
- ◆ First floor - Master double sleight bed bedroom with en-suite spa bath and separate shower. Plus 2x double (zip & link) bedrooms sharing bathroom, shower over bath.

Dinning Capacity

- ◆ The Manor - up to 45 guests in the grand dinning hall
- ◆ The Tudor Barn - 12 guests
- ◆ The Mill House - 16 guests, more if required

Catering

- ◆ Primarily self catered
- ◆ Fully or partially catered - chefs can be recommended
- ◆ Please contact us with your requirements or for sample menus

Facilities

The following facilities are spread out across the estate and offered exclusively for all guests staying within the estate, unless stated differently.

- ◆ Outdoor heated swimming pool
- ◆ Tennis court
- ◆ Hot tub
- ◆ Croquet lawn
- ◆ BBQ
- ◆ Indoor Sauna
- ◆ Open fires - Downstairs only, first set of logs complimentary.
- ◆ Games room with pool table. Table football (Tudor Barn)
- ◆ Satellite TV with main channel and sports package
- ◆ Wi-Fi throughout
- ◆ Bose music system

Check in / out times

- ◆ Check in - 4pm
- ◆ Check out - 10am
- ◆ There is the possibility for flexibility on these by prior arrangement, especially when having catering.

Pets

- ◆ 2 Dogs welcome by prior arrangement at the owners discretion



HOUSE PARTY SOLUTIONS

The Medieval Somerset Estate

YOUR STAY (cont.)

Disabled

- ◆ Downstairs bedroom and en-suite wet room in the Manor
- ◆ Ground floor bedrooms in both Tudor Barn & Mill House

Weddings

- ◆ Various packages available for weddings across the Estate and please do contact us with your requirements and ideas for the best suited or bespoke package. Please find below a few of our advertised packages.

A midweek overnight wedding at the Medieval Estate

- ◆ Exclusive use of the Estate from 10am - noon the following day / accommodation across all three properties / champagne and canape reception / wedding breakfast for up to 42 guests / red & white house wine for the wedding breakfast / champagne for the toasts / use of the Civil Ceremony license in the banqueting hall or pergola / house DJ / midnight raid the larder / full English breakfast pre departure
- ◆ Prices for the Estate sleeping 42 guests £22,000

A weekend overnight wedding at the Medieval Estate

- ◆ Exclusive use of the Estate from 10am - noon the following day / accommodation across all three properties / champagne and canape reception / wedding breakfast for up to 42 guests / red & white house wine for the wedding breakfast / champagne for the toasts / use of the Civil Ceremony license in the banqueting hall or pergola / house DJ / midnight raid the larder / full English breakfast pre departure
- ◆ Prices for the Estate sleeping 42 guests £29,000

Stag & Hen parties

- ◆ Please enquire

Corporate Facilities

- ◆ The Medieval Somerset Estate is an ideal location for corporate events where total discretion and privacy is guaranteed.
- ◆ Onsite and offsite activities can be arranged for team building events.
- ◆ Accommodation for up to 50 delegates spread out across three properties offers very flexible arrangements and occupancy for any team.
- ◆ Please enquire for bespoke corporate options and requirements





HOUSE PARTY SOLUTIONS

The Medieval Somerset Estate

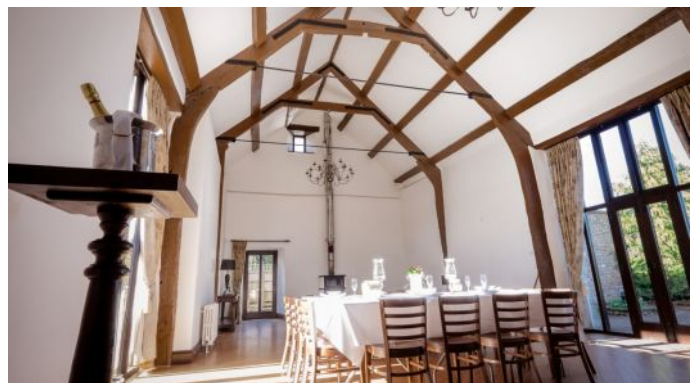
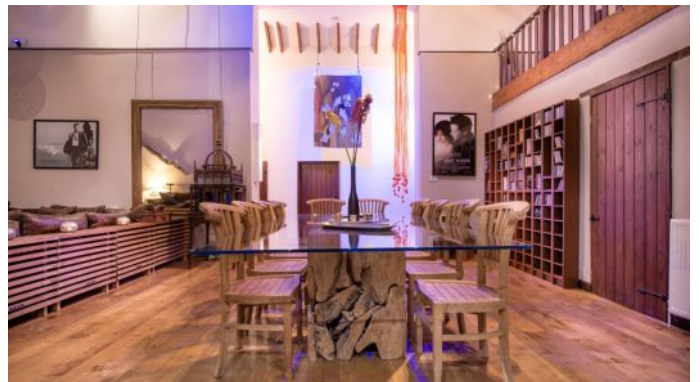
ACTIVITIES

On-site Activities

- ◆ Swimming
- ◆ Tennis
- ◆ Archery
- ◆ Laser shooting
- ◆ Other external activities can be provided by request

Local Attractions

- ◆ 30 minute drive from the beautiful Jurassic Coast
- ◆ Kingihtshayes Court in Tiverton, a Victorian Gothic mansion
- ◆ Wonder the romantic gardens at Cothay Manor near Wellington
- ◆ Immerse yourself in local pursuits such as fishing, shooting and horse riding
- ◆ Visit Sheppy's cider museum in Taunton to experience how local Somerset cider is made
- ◆ Farmer's market in Wellington
- ◆ Shopping in Taunton or Exeter
- ◆ Cheddar Gorge and Wookey Hole
- ◆ Follow one of the nearby countryside trails
- ◆ Somerset county cricket in Taunton
- ◆ Exeter Chiefs rugby
- ◆ Quad biking





HOUSE PARTY SOLUTIONS

The Medieval Somerset Estate

LOCATION

You have the best of both worlds when staying at the Medieval Manor. Set within an area of outstanding natural beauty at the foot of The Blackdown Hills, which gives a very rural feel, but having the benefit of shops and attractions nearby.

Distance from

- ◆ London - 3 hours / 1hr 40 minutes via train
- ◆ Bristol - 1 hour
- ◆ Manchester - 3.5 hours
- ◆ Leeds - 4.5 hours

Nearest airports

- ◆ Exeter airport - 30 minutes
- ◆ Bristol airport - 50 minutes
- ◆ Birmingham airport - 2.25 hours
- ◆ Heathrow - 2 hours

Nearest railway station

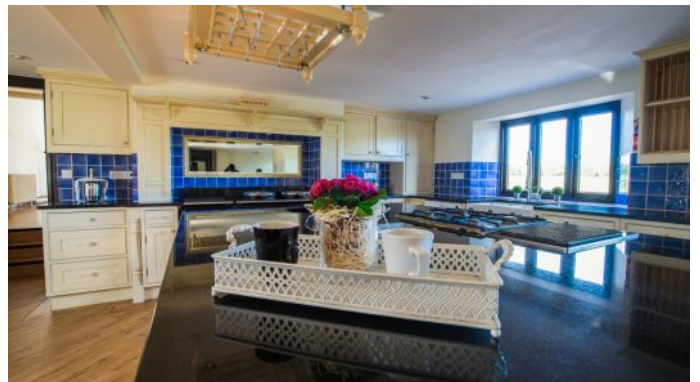
- ◆ Taunton - 15 minutes
- ◆ Tiverton Parkway - 15 minutes
- ◆ Exeter St Davids - 30 minutes

Distance to nearest village

- ◆ Wellington - 5 minutes

Distance to nearest town

- ◆ Taunton - 15 minutes





HOUSE PARTY SOLUTIONS

The Medieval Somerset Estate



PRICES

2022

Weekends

- ◆ Catered blast - please view this amazing (off-peak) package within our Special Offers page!
- ◆ The 30hr experience! Guests looking for complete escapism are welcomed to The Medieval Estate to experience an early check in and late check out, an overnight stay within either property and with complimentary cuisine all for £375 per person. upgrade to 48 hours for £595.
- ◆ 2 nights: Very bespoke and dependent on group size and guests requirements.
- ◆ 3 nights: Very bespoke and dependent on group size and guests requirements.
- ◆ Off season rate based on 40 guests from £13,500 for 2 nights.
- ◆ Catering offered on request and either fully catered or part catered dependent on client requirements.

Midweek

- ◆ 2 night minimum stay midweek
- ◆ Monday - Friday: Special mid-week price, please enquire.

Weekly

- ◆ 6 nights exclusive use of the Estate for up to 42 guests priced at £29,995

Christmas & New Year

- ◆ Christmas - up to 6 nights £29,995
- ◆ New Year - up to 6 nights £29,995
- ◆ Please enquire for pricing and specifications

Booking terms

- ◆ For bookings made more than 12 weeks prior to commencement date, a 50% deposit is due
- ◆ For bookings made less than 12 weeks prior to commencement date the full rent is due
- ◆ A cautionary damages deposit is also due and confirmed before booking





HOUSE PARTY SOLUTIONS

The Medieval Somerset Estate

