



HOUSE PARTY SOLUTIONS



Cotswold Manor Cottage

Cotswolds

SLEEPS 16-18



- ◆ Flexible sleeping arrangements for 16 guests plus an additional 2 on put-up beds
- ◆ Covered Hot Tub
- ◆ Heritage Property & originally built for the Prime Minister in the 1800s
- ◆ Cotswold countryside & walks immediately from your doorstep
- ◆ Dining area For 16
- ◆ Large Open Grate Fire
- ◆ Within 30 minutes of Bristol & Bath
- ◆ Landscaped Gardens
- ◆ Dog Friendly by prior arrangement - at no additional charge
- ◆ Parking for 6 cars - with more spaces nearby



HOUSE PARTY SOLUTIONS

Cotswold Manor Cottage



OVERVIEW

* Special Offer: September & October Weekends - £2,300 for up to 16 guests, plus an additional 2 guests at £100 per person. Offer includes a complimentary early check-in of 2pm, and late check-out at 12 noon - equating to a £950 saving for a group of 16*

Built in 1800, this historic gem once belonged to the Duke of Beaufort and the Wordsworth family.

Discover a blend of historical charm and contemporary luxury. The interior has been thoughtfully updated while preserving its rich heritage. Experience bold decor, open kitchen & dining and a living room warmed by an open fire.

The expansive kitchen, complete with modern amenities like wine coolers, is fully equipped to host your large gathering. It's ideal for your celebration meal and could be expertly utilised by a private chef for the occasion.

With accommodation for up to 16 guests in 4 comfortable bedrooms, the house is family-friendly with pet-friendly amenities and a true home away from home.



HOUSE PARTY SOLUTIONS

Cotswold Manor Cottage

YOUR STAY

Number accommodated

- ◆ Standard set up sleeps 16
- ◆ Up to 18 on request in pull-out bed's which are chargeable

Bedroom & bathroom configuration

Ground Floor

- ◆ Bathroom with shower

First floor - sleeps 8 in 2 bedrooms with 2 bathrooms

- ◆ Foxley - 2 x single beds
- ◆ Castle Combe - 3 x Kingsize beds
- ◆ Family bathroom with bath and shower
- ◆ Separate bathroom with shower

Second Floor - sleeps 8 in 2 bedrooms

- ◆ Aston - 1 x King bed plus 2 x single beds
- ◆ Snowhill: 1 x King bed plus 2 x single beds

Dining capacity

- ◆ Kitchen Diner - seats 16
- ◆ Alfresco seating area for spring & summer dining

Catering

- ◆ Hired on a self-catered basis however, local caterers can be recommended on request
- ◆ Plenty of award-winning pubs and fine dining restaurants nearby including a pub just opposite, serving a good selection of food and drink
- ◆ Expansive kitchen equipped with all amenities, is perfect for those who prefer to hire a private chef

Facilities

- ◆ Covered Hot Tub
- ◆ Large charcoal BBQ
- ◆ High speed Wi-Fi
- ◆ High quality Bluetooth speaker
- ◆ Large HD Smart TV
- ◆ Large open fire
- ◆ Landscaped gardens - perfect for enjoying an alfresco breakfast or champagne picnic amongst the flowers
- ◆ Fully equipped Kitchen
- ◆ Premium Linen & Towels
- ◆ 2 x travel cots available on request
- ◆ Parking for 6 cars (with more spaces nearby)

Check In/Out

Check out by 10am

An early check in & late check out can be possible on request if available at an additional charge of £200

- ◆ Dogs welcome by arrangement, at no additional charge

The property is accessible, however please enquire in advance to discuss your requirements

Stags & Hens



HOUSE PARTY SOLUTIONS

Cotswold Manor Cottage

ACTIVITIES

Onsite Activities

Landscaped Gardens

Local Attractions

- ◆ Cotswold countryside and walks directly from your doorstep
- ◆ Visit the Roman Baths and walk where the Romans walked, and taste the waters!
- ◆ Go see the private gardens of their Royal Highness, the Prince of Wales and the Duchess of Cornwall at Highgrove
- ◆ Visit the magnificent Gloucester Cathedral- which features in the Harry Potter films as Hogwarts
- ◆ Shopping in Bath or Bristol
- ◆ Dine in one of the award-winning restaurants at Calcot Manor or Castle Combe Manor House
- ◆ Visit the spectacular 17th Century mansion Dyrham Park set amongst beautiful gardens and a deer park in Chippenham
- ◆ Enjoy a number of activities locally including shooting, paintballing, canoeing, kayaking, sailing and go-karting
- ◆ Masses of walking, cycling or horse riding at Westonbirt National Arboretum
- ◆ Nearby is England's oldest inhabited castle and most historic home of Berkeley Castle
- ◆ The Cotswolds Way starts from the Manor
- ◆ Antique shopping in Tetbury





HOUSE PARTY SOLUTIONS

Cotswold Manor Cottage

LOCATION

The Cottage is located in the picturesque hamlet of Petty France in the Cotswolds. The property sits on the edge of the Badminton Estate in Gloucestershire and has far reaching views of the surrounding Area of Outstanding Natural Beauty.

Distance From:

- ◆ London - 2 hours, 10 minutes / 110 miles
- ◆ Birmingham - 1 hour, 35 minutes / 86 miles
- ◆ Bristol - 25 minutes / 18 miles
- ◆ Bath - 30 minutes / 15 miles

Nearest Airports:

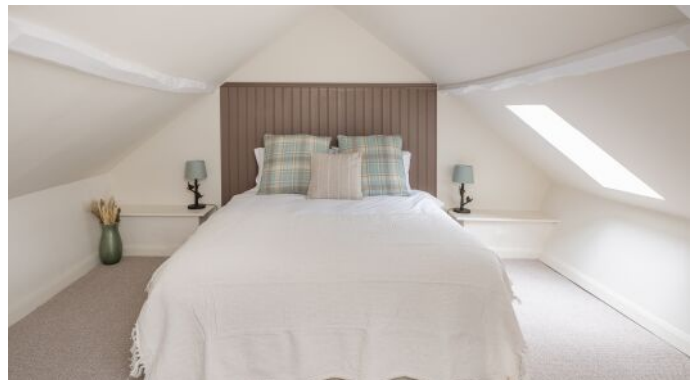
- ◆ Bristol - 45 minutes / 28 miles

Nearest Railway Stations:

- ◆ Chippenham - 30 minutes / 14 miles

Distance to nearest Village & Town

- ◆ Badminton - 5 minutes / 3 miles
- ◆ Bristol - 25 minutes / 18 miles
- ◆ Bath - 30 minutes / 15 miles

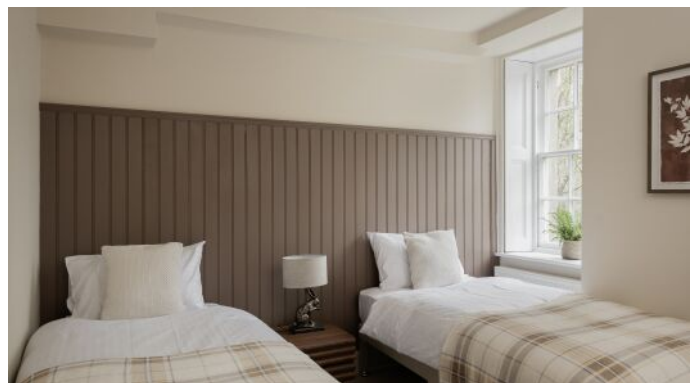




HOUSE PARTY SOLUTIONS

Cotswold Manor Cottage

FLOOR PLANS





HOUSE PARTY SOLUTIONS

Cotswold Manor Cottage



PRICES

2025

All bookings are seasonal and prices vary throughout the year. Please enquire for a confirmed rate based on your preferred dates.

The prices below are based on up to 16 guests. Additional guests - up to a maximum of 18 including children.

Minimum stay:

- ◆ Weekend - 2 nights
- ◆ Midweek - 2 nights during low season / 4 nights during peak season
- ◆ Christmas - 6 nights
- ◆ New Year - 4 nights

Weekend

- ◆ From £2,800 for 2 nights - based on up to 16 guests
- ◆ From £3,100 for 3 nights -based on up to 16 guests

Midweek

- ◆ From £2,000 for 2 nights during low - based on up to 16 guests
- ◆ From £2,400 for 4 nights during peak season - based on up to 16 guests

Weekly

- ◆ From £3,900

Christmas & New Year

- ◆ Christmas - from £3,900
- ◆ New Year - from £2,400

Booking Terms

- ◆ 40% deposit required to secure
- ◆ Balance due 8 weeks prior to arrival.
- ◆ Damages deposit of £1,000.

