



HOUSE PARTY SOLUTIONS



# Barnett Hill

Surrey

SLEEPS 109



- ◆ Queen Anne-style country house dates back to 1905. Offering elegant interiors, contemporary and design-led, tree lined drive, set within 26 acres of verdant grounds
- ◆ Sleeping 109 guests across 56 beautiful bedrooms
- ◆ Countryside retreat, nestled in the Surrey Hills
- ◆ Private secluded and tucked away just a short distance from the M25. Only 45 minutes from Gatwick Airport and London
- ◆ 2 AA Rosette Oak Room restaurant suitable for an exclusive dining experience with private terrace





HOUSE PARTY SOLUTIONS

## Barnett Hill



### OVERVIEW

Barnett Hill is a bold re-imagining of a country house hotel. Contemporary and design-led, the 56 rooms and suites are appointed with luxurious and chic furnishings, set across the main Mansion house, Couch House, Mews and Gardner's Cottage. Revealing itself at the end of a winding tree lined drive, Barnett Hill is set within 26 acres of verdant grounds, with manicured gardens and terraces all around the magnificent Queen Anne-style building.

Described by the Telegraph as a 'gingerbread-brick palace', Barnett Hill was originally a private estate for the Thomas Cook family before becoming a Red Cross hospital. Today, it is a thoroughly modern country house, set in the heart of the Surrey Hills with a passion for delicious food, superb service and divine rooms. It is the ideal countryside getaway, under an hour from London and minutes from Guildford.



HOUSE PARTY SOLUTIONS

## Barnett Hill

### YOUR STAY

#### Number accommodated

- ◆ Sleeping 109 guests across 56 beautiful bedrooms
- ◆ A selection of the bedrooms can include additional beds and cots can be provided for infants

#### Bedroom & Bathroom configuration

- ◆ 56 bedrooms in total, 13 of which can be twinned
- ◆ 3 single rooms
- ◆ 23 standard cosy doubles
- ◆ 12 comfy King
- ◆ 7 luxury King
- ◆ 8 splendid suites
- ◆ 2 master suites
- ◆ 1 master suite 43
- ◆ All bedrooms offer en-suite bathrooms (29 bath and shower & 27 just shower)

#### Dining capacity

Private dining, whether you are celebrating an anniversary, a recent success with colleagues or a big birthday. We have a fantastic selection of private dining spaces, plus the terrace and a selection of spots for pre-dinner drinks. Barnett Hill has the whole experience covered!

- ◆ Garden suite - seating 70
- ◆ Drawing room - seating 40
- ◆ Oak Hall - seating 50
- ◆ The Hub - seating 30

#### Catering

Superb in-house catering team available for all events and celebrations. Please enquire for sample menus and further information.

- ◆ Full English breakfast from £15pp. Continental from £9pp
- ◆ Three course from £40pp
- ◆ Champagne afternoon tea from £32.50pp
- ◆ Afternoon tea from £22.50pp
- ◆ Cream tea from £11pp

#### Facilities

- ◆ Utopia Spa treatments
- ◆ Civil ceremony license
- ◆ Gym
- ◆ Complimentary car parking
- ◆ Pet friendly bedrooms
- ◆ Air conditioning
- ◆ Complimentary Wi-Fi
- ◆ Private Tea House in the grounds

#### Corporate

- ◆ Private, secluded and tucked away just a short distance from the M25, Barnett Hill Hotel is the perfect venue for meeting, conferences, product launches, team building and more. Just 45 minutes from both Gatwick Airport and London, our business and meeting venue in Surrey provides productive spaces for up to 70 delegates, innovative technology and the perfect location for an away day outside of London.
- ◆ Please enquire with your requirements and numbers, we would be delighted to put together a tailored quote for you.

#### Wedding

- ◆ Weddings at Barnett Hill are bespoke and individual and the experienced wedding team love nothing more than helping to make your dreams a reality. When taking over the whole of Barnett Hill the possibilities are endless.
- ◆ In the mansion, all shapes and sizes of weddings fit beautifully. The Drawing room, with its distinctive wood paneling, can accommodate intimate occasions for up to 40 guests, whilst the light and charming Garden Suite is perfect for up to 80 guests. The 56 rooms & suites will accommodate all your wedding guests in style with a full recovery breakfast the morning after.
- ◆ Wedding planning and assistance is offered to help take care of almost every aspect and finer details imaginable, making the lead up and big day itself completely stress free!
- ◆ Civil ceremony license
- ◆ Enquire for more information

#### Disabled Facilities

- ◆ Limited disabled facilities
- ◆ Disabled toilet in the main house
- ◆ 1x Luxury King located in the Courtyard



HOUSE PARTY SOLUTIONS

## Barnett Hill

### YOUR STAY (cont.)

#### Check in / out times

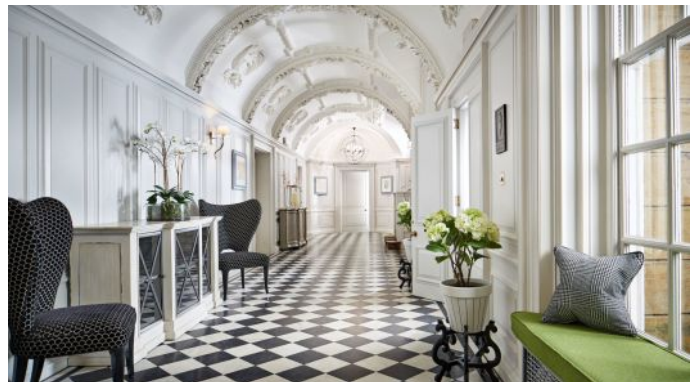
- ◆ Check in - 3pm
- ◆ Check out - 11am
- ◆ The hotel is of course open 24 hours a day and guests are welcome to arrive and depart at their convenience. Groups taking exclusive use can discuss check in and out flexibility, to suit their event or celebration (subject to availability).

#### Pets

- ◆ Barnett Hill offers the ideal destination to escape and bring along your four-legged companion, we have even developed our Dog Guide to help with planning your stay and to answer any questions you have.
- ◆ 2x comfy King rooms located in the Courtyard

#### Other services offered

- ◆ Housekeeping services
- ◆ Taxi service
- ◆ Babysitters







HOUSE PARTY SOLUTIONS

## Barnett Hill

### ACTIVITIES

#### On-site Activities

- ◆ Cycling or walking in the Surrey Hills
- ◆ Recommended team building suppliers for some fun and different activities
- ◆ Utopia spa treatments available

#### Local attractions

- ◆ Guildford
- ◆ Surrey Hills
- ◆ Guildford Escape Rooms
- ◆ Spike Heritage Centre
- ◆ Wisley
- ◆ Box Hill
- ◆ Guildford Castle
- ◆ Leith Hill
- ◆ Winkworth





HOUSE PARTY SOLUTIONS

## Barnett Hill

### LOCATION

The gorgeous Barnett Hill sits snug in the petite village of Wondersh. Hidden away in the Surrey Hills with the most stunning views. Located just 10 minutes from Dorking centre and Guildford Railway Station, offering direct trains to central London.

### Distance from

- ◆ London - 1 hour 15 minutes / 37 miles
- ◆ Bristol - 2 hours 10 minutes / 112 miles
- ◆ Birmingham - 2 hours 25 minutes / 140 miles
- ◆ Manchester - 4 hours / 223 miles

### Nearest airports

- ◆ London Gatwick - 37 miles
- ◆ London Heathrow - 26 miles
- ◆ London City airport - 70 miles

### Nearest train station

- ◆ Guildford - 11 minutes / 4 miles

### Distance to Town & Village

- ◆ Guildford - 14 minutes / 5 miles
- ◆ Wondersh - 4 minutes / 1 mile

Taxi service can be arranged







HOUSE PARTY SOLUTIONS

## Barnett Hill



### PRICES

2024 & 2025

#### Exclusive use

- ◆ There's nothing quite as impressive as hosting an event in your own Queen Anne Style Country House. With 56 luxury bedrooms, a selection of cosy lounges, nine diverse meeting and conference spaces and an award-winning restaurant all packed into our 22-acre estate, Barnett Hill Hotel is the perfect venue for any exclusive use event.
- ◆ Priced from £24,000 for full exclusive hire
- ◆ Please enquire for further information

#### Non exclusive use

- ◆ Please enquire for our non-exclusive packages

#### Christmas & New Year

- ◆ Please enquire for exclusive use bookings over the festive period. We would be delighted to put together a package based on your requirements

#### Booking terms

- ◆ Please enquire, booking terms differ for the duration and type of stay
- ◆ 20% deposit required to secure any booking





HOUSE PARTY SOLUTIONS

## Barnett Hill

