



HOUSE PARTY SOLUTIONS



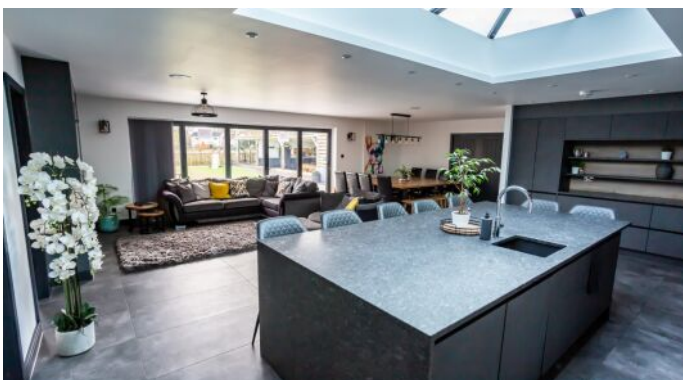
Acton Barn

Gloucestershire

SLEEPS 24



- ◆ Beautifully decorated and furnished barn conversion, offering flexible accommodation for 20+ guests
- ◆ Set within 1.5 acres with its own adjacent field
- ◆ Hot tub, games room & cinema room
- ◆ Master suite with projector TV, drinks fridge & roll top bath
- ◆ Outside entertainment area with bar, loungers and flexible alfresco dining options
- ◆ Located close to both Bath & Bristol





HOUSE PARTY SOLUTIONS

Acton Barn



OVERVIEW

Acton Barn is tastefully furnished throughout and set in 1.5 acres of grounds, with its own field adjacent to the countryside. It is approached via a private driveway, with electric gates and there is ample off-road parking. This beautifully restored barn conversion is set in its own grounds on the outskirts of the ancient village of Iron Acton. It is a fabulous country property with sumptuous decor, large cinema, games room and a six-seater hot tub. It is the perfect party house to rent for hen & stag groups, birthday parties, family celebrations and get-togethers.

Time your visit right and you could enjoy May Day celebrations on Iron Acton Green, or a night at the proms in Iron Acton Meadows. The historic Acton Court, built to impress Henry VIII, is close-by and open to visitors for tours and special events while the nearby market town of Chipping Sodbury offers cafes, boutiques and a selection of pubs which serve food. If city night life is on the itinerary, both Bristol and Bath are within a half hour car journey.



HOUSE PARTY SOLUTIONS

Acton Barn

YOUR STAY

Number accommodated

- ◆ The main Barn offers 6 bedrooms with space for 24 guests (please note that many of the bedrooms do not have doors)

Bedroom & bathroom configuration

Ground floor

- ◆ Bedroom 1 - Sleeping 4 guests across 4 singles or 2 double beds. En-suite shower room
- ◆ Bedroom 2 - Sleeping 3 guests across 1 double & 1 single bed
- ◆ Bedroom 3 (Master suite) - 1x Super King bed with 2x singles, plus en-suite wet room. TV film projector, drinks fridge & roll top bath
- ◆ Bedroom 4 (Dressing room) - 1x Super King bed plus 1x single bed

First floor

- ◆ Bedroom 5 - Sleeping 6 guests across 6x single beds (can be set up as doubles) with family bathroom
- ◆ Bedroom 6 - 2x Super King beds or 4x singles beds, plus en-suite bathroom

Dining capacity

- ◆ Dining room seats 20
- ◆ Flexible alfresco dining options

Catering

- ◆ Hired on a self-catered basis however, local recommended caterers can be provided

Facilities

- ◆ Large cinema room
- ◆ Games room
- ◆ Hot tub
- ◆ Outside entertainment area with bar, TV & drinks fridge
- ◆ Private field
- ◆ State of the art kitchen

Check in / out times

- ◆ Check in from 3pm
- ◆ Check out by 10am

Pets

- ◆ Two dogs welcome by prior arrangement

Disabled facilities

- ◆ There are four bedrooms located on the ground floor with two wet rooms

Stag & Hen groups

- ◆ Both Stag & Hen groups welcome



HOUSE PARTY SOLUTIONS

Acton Barn

ACTIVITIES

On-site activities

- ◆ The Barn is set within 1.5 acres with its own private field
- ◆ Hot tub
- ◆ Games room
- ◆ Cinema room
- ◆ Large outdoor entertainment area with bar

Local attractions

- ◆ Visit Acton Court
- ◆ The historic city of Bath is well worth a visit
- ◆ Experience the nightlife of both Bristol & Bath





HOUSE PARTY SOLUTIONS

Acton Barn

LOCATION

Approached via a private driveway, with electric gates and there is ample off-road parking. Time your visit right and you could enjoy May Day celebrations on Iron Acton Green, or a night at the proms in Iron Acton Meadows. The historic Acton Court, built to impress Henry VIII, is close-by and open to visitors for tours and special events while the nearby market town of Chipping Sodbury offers cafes, boutiques and a selection of pubs which serve food. If city night life is on the itinerary, both Bristol and Bath are within a half hour car journey.

Distance from

- ◆ London - 2 hours 30 minutes / 114 miles
- ◆ Bristol - 22 minutes / 10 miles
- ◆ Bath - 35 minutes / 16 miles
- ◆ Birmingham - 1 hour 30 minutes / 87 miles
- ◆ Manchester - 2 hours 55 minutes / 158 miles

Nearest airport

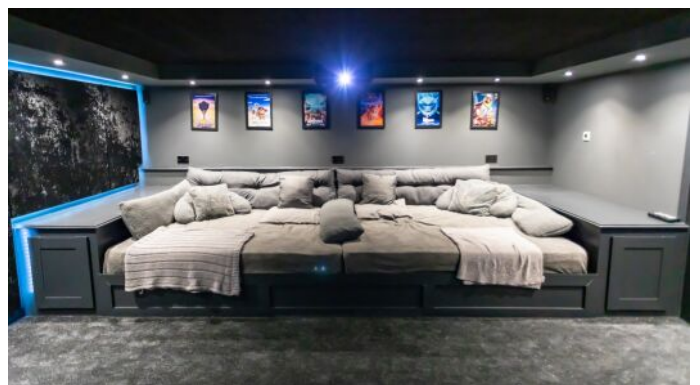
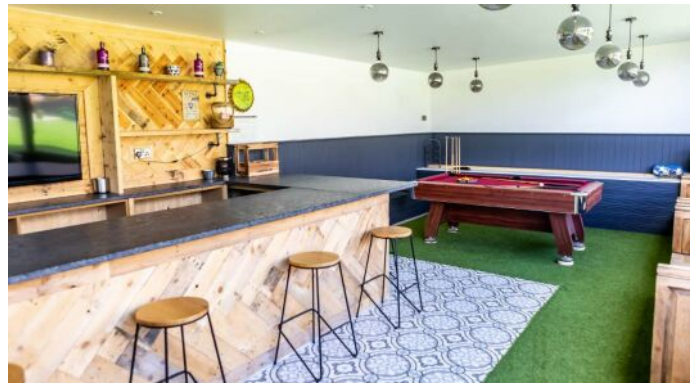
- ◆ Bristol airport - 40 minutes / 18 miles

Nearest train station

- ◆ Bristol Parkway

Distance to local village / town

- ◆ Iron Acton - Located only 1 mile from the Barn





HOUSE PARTY SOLUTIONS

Acton Barn



PRICES

2023 Low season: January, February, March, October, November & December High season: April, May, June, July, August & September

Weekend

- ◆ Low season: £4,500 for 2 nights or £5,250 for 3 nights
- ◆ High season: £5,000 for 2 nights or £5,850 for 3 nights

Midweek

- ◆ Low season: £3,500 for 2 nights, £4,250 for 3 nights & £5,000 for 4 nights
- ◆ High season: £4,000 for 2 nights, £4,950 for 3 nights & £5,850 for 4 nights

Weekly

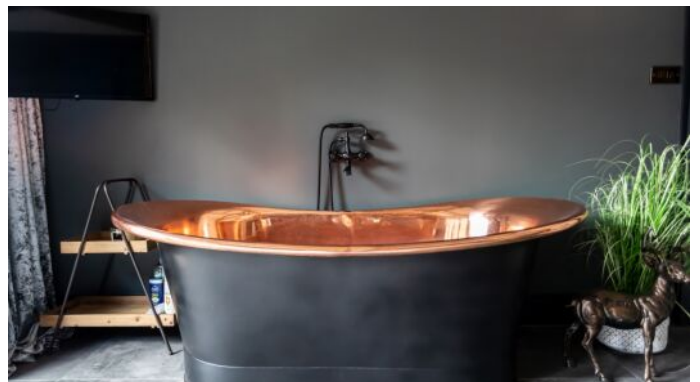
- ◆ Low season: £8,250
- ◆ High season: £9,000

Christmas & New Year

- ◆ Please enquire for Christmas & New Year pricing & availability

Booking terms

- ◆ 40% deposit required to secure any booking
- ◆ Balance required 4 weeks prior to arrival
- ◆ £1,500 refundable damages deposit





HOUSE PARTY SOLUTIONS

Acton Barn

