



HOUSE PARTY SOLUTIONS



# Stylish Farmhouse

Dorset

SLEEPS 10



- ◆ Tranquil remote setting with breath-taking views across the rolling Dorset countryside
- ◆ Impressive former Farmhouse with a Traditional exterior, hiding a modern meticulously decorated interior
- ◆ Self catering modern kitchen, fully equipped for casual gatherings or celebratory dinners
- ◆ Yoga & wellness can be provided on-site
- ◆ West Bay, a major gateway to the Jurassic Coast is just 20 minutes away
- ◆ Private terrace & outdoor dining area





HOUSE PARTY SOLUTIONS

## Stylish Farmhouse



### OVERVIEW

A gorgeous 5 bedroom country house set within the extensive grounds of a larger estate. The estate was previously a working farm with the buildings all renovated. Boasting a tranquil remote setting, meticulously decorated, private dining and entertaining space, outdoor seating and views.

The rooms are beautifully and comfortably presented with a modern take on traditional décor. The house boasts both a spacious kitchen-diner and additional function rooms which can be used for more formal meeting or dining spaces. Whilst the patio takes advantage of the panoramic views and serves as the perfect setting for alfresco dining throughout the spring and summer.





HOUSE PARTY SOLUTIONS

## Stylish Farmhouse

### YOUR STAY

#### <span>Number accommodated</span>

- ◆ Sleeping a maximum of 10 guests across 5 luxurious bedrooms
- ◆ Further accommodation on-site within two beautiful Barn conversions. Please view: Stylish Barn Conversions

#### <span>Stag & Hen groups</span>

- ◆ Both Stag & Hen groups welcome, a higher damage deposit will apply

#### Bedroom & bathroom configuration

- ◆ All five bedrooms offer a double bed, two of which can be separated into twins (zip and link beds)
- ◆ Each bedroom boasts a en-suite bathroom (4 with bath & shower, 1 with bath)
- ◆ 4 of the bedrooms have a steam room

#### <span>Dining capacity</span>

- ◆ Dining up to 10 guests within the kitchen
- ◆ The dining room offers space for a maximum of 30 guests
- ◆ Alfresco dining for 10 guests

#### <span>Catering</span>

- ◆ Hired on a self-catered basis however, local recommended caterers can be provided

#### <span>Facilities</span>

- ◆ Use of indoor pool attached to one of the Barns
- ◆ 4 of the bedrooms have a steam room
- ◆ Private terrace & dining area
- ◆ Meticulously decorated & presented interiors
- ◆ Large open plan kitchen lounge area
- ◆ 5 en-suite bedrooms
- ◆ Fully equipped kitchen

### Weddings

- ◆ Please enquire

#### <span>Check in/out times</span>

- ◆ Check in from 4-5pm (can be flexible)
- ◆ Check out by 10am.

#### <span>Pets</span>

- ◆ Not suitable for pets

#### <span>Disabled facilities</span>

- ◆ Unfortunately not suitable for those with limited mobility



HOUSE PARTY SOLUTIONS

## Stylish Farmhouse

### ACTIVITIES

#### **<span>On-site Activities</span>**

- ◆ Yoga & wellness can be arranged on-site
- ◆ Beautiful gardens & grounds with superb views over the Dorset countryside

#### **<span>Local Attractions</span>**

- ◆ Visit West Bay beach nearby
- ◆ Go hot-air ballooning from Sherborne over the Dorset countryside
- ◆ Visit the romantic valley gardens at Mapperton in Beaminster
- ◆ Take a trip to Stonehenge
- ◆ Go for a walk and wander around historical centre Beaminster
- ◆ Go see some of the National Portrait Gallery collection at Montacute House
- ◆ Visit the medieval buildings in Sherborne
- ◆ Visit Tudor manor house Barrington Court





HOUSE PARTY SOLUTIONS

## Stylish Farmhouse

### LOCATION

Deep in the heart of the Dorset countryside lays this impressive Farmhouse. Sociable, yet tucked away in secluded splendour within a patchwork-quilt Dorset setting.

#### **<span>Distance from</span>**

- ◆ London - 3 hours / 144 miles
- ◆ Exeter - 1 hour 10 minutes / 41 miles
- ◆ Bristol - 1 hour 40 minutes / 53 miles
- ◆ Manchester - 4 hours 20 minutes / 230 miles

#### **<span>Nearest airports</span>**

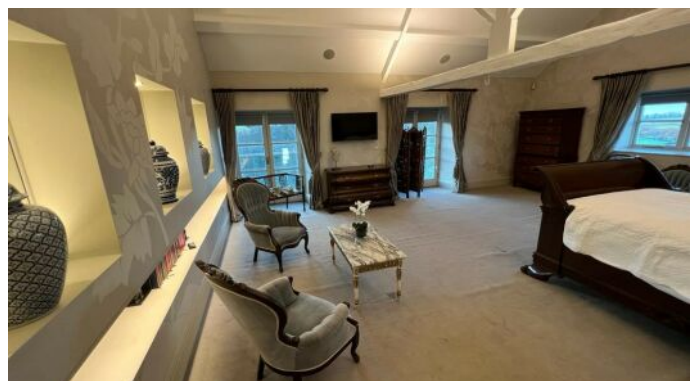
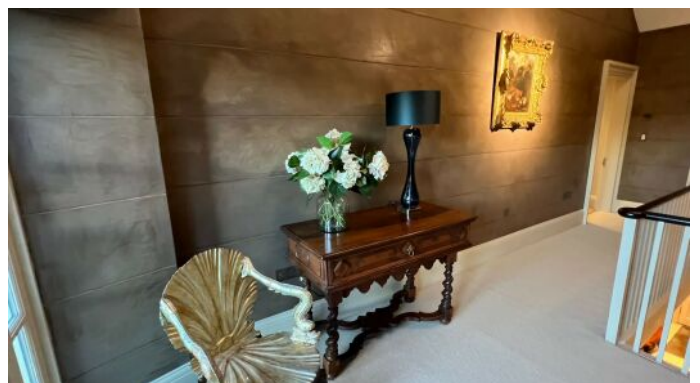
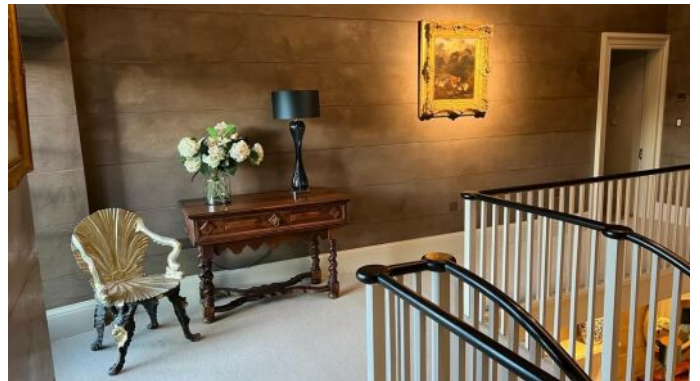
- ◆ Exeter Airport - 55 minutes / 37 miles

#### **<span>Nearest railway stations</span>**

- ◆ Crewkerne Railway Station - 12 minutes / 5 miles

#### **<span>Distance to Town/Village </span>**

- ◆ Beaminster - 5 minutes / 2 miles







HOUSE PARTY SOLUTIONS

## Stylish Farmhouse



### PRICES

2024/25





HOUSE PARTY SOLUTIONS

## Stylish Farmhouse

