



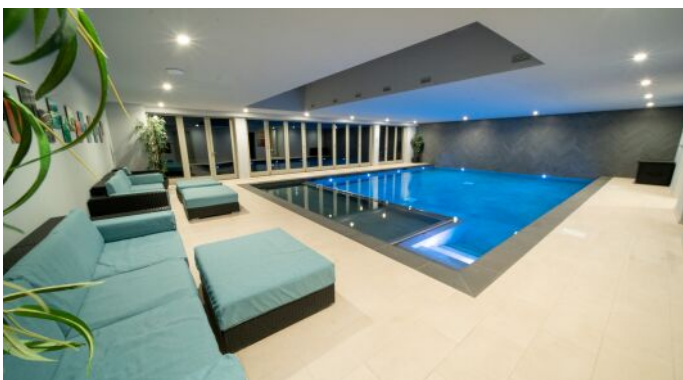
HOUSE PARTY SOLUTIONS



Sea View Manor

Dorset

SLEEPS 20



- ◆ Overlooking the beautiful Jurassic Coast with views past the private meadow on to Lulworth Cove, one of our most beautiful coastlines
- ◆ Sleeping 20 guests within 10 opulent en-suite bedrooms
- ◆ Heated indoor saline swimming pool held at roughly 31C
- ◆ Games room
- ◆ Cinema room with Apple TV, Prime & Netflix
- ◆ Second floor library
- ◆ Bar
- ◆ Open fires
- ◆ Sonos sound system



HOUSE PARTY SOLUTIONS

Sea View Manor



OVERVIEW

Sea View Manor has recently been fully rebuilt to the highest standard with no expense spared to create a truly unique home away from home. The property became a coastal retreat that was the consistent with the heritage of the local area but was also well equipped with all state-of-the-art amenities and a luxury finish. All 10 en-suite bedrooms have Super King beds, built in wardrobes and a walk in shower area with two of the en-suites also having a free-standing bathtub.

The entire ground floor is a very airy, open-plan design. The beautiful views of the Jurassic Coast can be enjoyed from anywhere in the room; from dining room to copper-topped bar to living room and open log fire.

A note from the owners

When designing the house, all of the various possible needs of our future guests were considered and incorporated; creating an inviting space that offered a balance of traditional and modern.



HOUSE PARTY SOLUTIONS

Sea View Manor

YOUR STAY

Number accommodated

- ◆ Sleeping 20 guests

Bedroom & bathroom configuration

- ◆ 10 large opulent bedrooms with built in wardrobes, all offering en-suite bathrooms
- ◆ 2 of the en-suite bathrooms include a freestanding bath

Dining capacity

- ◆ Seating for 20 around the dining table
- ◆ Seating for 7 around the bar
- ◆ The open plain living communal area can comfortably accommodate 20 guests
- ◆ Marquee option for the rear garden capable of seating 120 guests

Catering

- ◆ Hired on a self catered basis however, recommended caterers can be provided

Facilities

- ◆ Heated indoor saline pool with views out over the gardens and coast. Maintained at 31C and roughly 11m x 7m
- ◆ Games room with ping pong, darts, card table and puzzle table
- ◆ Cinema room with Apple TV, Prime & Netflix
- ◆ Bar
- ◆ Sonos sound system
- ◆ Large entertaining spaces inside and out
- ◆ Vast private gardens and grounds

Weddings

- ◆ The back garden is suitable for marquee options up to 120 guests
- ◆ We can recommend local caterers, marquee companies and other vendors

Corporate

- ◆ High speed WiFi throughout the property plus hard wired internet in various locations
- ◆ Garage can serve as a corporate meeting area with a 55" smart TV or a projector can be set up (projector would need to be supplied by the arriving company)
- ◆ Guideline day hire rates for the garage space from £1,500, with use of the garage space and house from £3,000

Check in / out times

- ◆ Check in - 4pm
- ◆ Check out - 10am

Pets

- ◆ Not suitable for pets

Disabled facilities

- ◆ There is a ground floor bedroom with no steps. Shower room however, no bars within the shower

Stag & Hen groups

- ◆ Not suitable for Stag & Hen groups



HOUSE PARTY SOLUTIONS

Sea View Manor

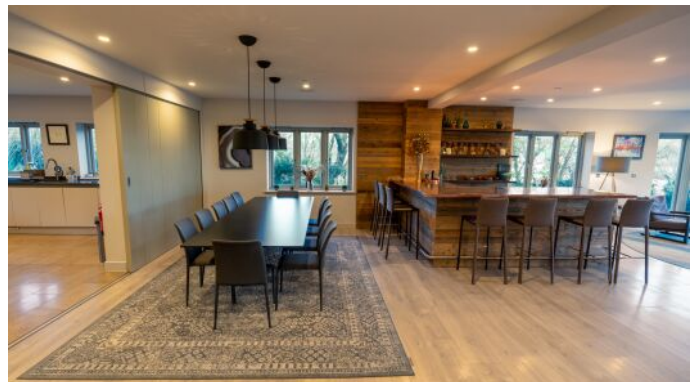
ACTIVITIES

On-site activities

- ◆ Heated indoor swimming pool
- ◆ Games room
- ◆ Cinema room
- ◆ Large gardens
- ◆ Bar
- ◆ Open plan living area perfect for entertaining

Local activities & attractions

- ◆ Lulworth Cove - walking distance
- ◆ South West Coastal Path
- ◆ Durdle door & Man O' War beach
- ◆ Fossil Forest - walking distance
- ◆ Lulworth Castle & Estate - 10 minute drive
- ◆ Corfe Castle - 20 minute drive
- ◆ Monkey World - 15 minute drive
- ◆ Tank museum - 15 minute drive





HOUSE PARTY SOLUTIONS

Sea View Manor

LOCATION

Overlooking the beautifully scallop shaped Lulworth Cove and on the stunning Jurassic Coast, Sea View Manor sits elegantly behind its modest meadow and really does provide an unrivalled rural and coastal location.

Distance from

- ◆ London - 2 hours 45 minutes / 128 miles
- ◆ Birmingham - 3 hours 25 minutes / 190 miles
- ◆ Bristol - 2 hours 10 minutes / 75 miles
- ◆ Exeter - 1 hour 45 minutes / 65 miles

Nearest airport

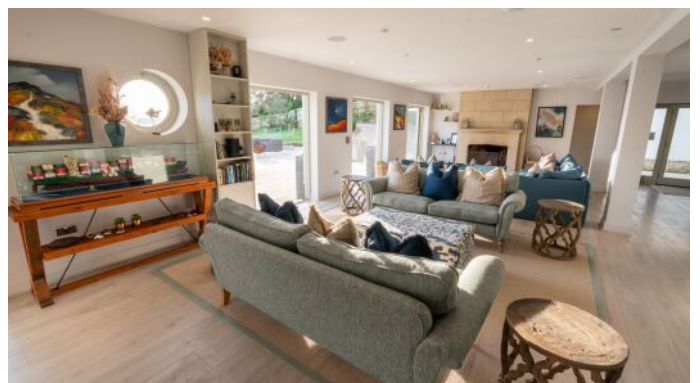
- ◆ Southampton - 1 hour 15 minutes / 55 miles
- ◆ Bristol - 1 hour 30 minutes / 63 miles

Nearest train station

- ◆ Wareham railway station - 18 minutes / 9 miles

Distance to village

- ◆ West Lulworth - 3 minutes / 0.5 miles





HOUSE PARTY SOLUTIONS

Sea View Manor

FLOOR PLAN

Lower Ground Floor

Ground Floor

First Floor

Second Floor





HOUSE PARTY SOLUTIONS

Sea View Manor



PRICES

2024 & 2025

Weekend

- ◆ 2 & 3 night weekend stays: Prices range from £9,385 to £11,250
- ◆ Please enquire for a confirmed price based on your time of year

Midweek

- ◆ 4 night minimum mid-week stays: Prices range from £10,720 to £12,055
- ◆ Please enquire for accurate pricing based on your chosen time of year

Weekly

- ◆ Weekly stays: Prices range from £18,785 to £25,740
- ◆ Please enquire for accurate pricing based on your chosen time of year

Christmas & New Year

- ◆ Christmas - please enquire
- ◆ New Year - please enquire

Booking terms

- ◆ Deposit - 50% will be required to secure your dates
- ◆ Balance - The remaining balance is then required no later than 60 days prior to arrival
- ◆ Damages deposit - £2,000





HOUSE PARTY SOLUTIONS

Sea View Manor

