



HOUSE PARTY SOLUTIONS



Montgomery Court

Somerset

SLEEPS 41-88



- ◆ Sleeps up to 80 across the estate. Bookings are for a minimum of 21 bedrooms sleeping 41 adults with the option to add on extra accommodation.
- ◆ Beautiful property steeped in history dating back 700 years to 1300
- ◆ Grand ballroom with grand piano
- ◆ Spa wing with Indoor heated swimming pool, jacuzzi, sauna and two treatment rooms
- ◆ Games room with full-sized snooker table
- ◆ Basement disco with no restriction on end time
- ◆ Yacht Club and Pavilion with lake based activities ☐ paddleboards, pedalos, canoe
- ◆ 1500 acres with woodland, paddocks and orchards
- ◆ Basement Casino, a perfect ending to a wedding or evening party
- ◆ Coarse and fly fishing in the properties private lakes
- ◆ Fully equipped gym
- ◆ Bicycles offered to guests to explore the grounds and local area on
- ◆ Tennis courts, lawn and hardcourt

Roof-top driving range to begin the Estate's 2-hole golf



HOUSE PARTY SOLUTIONS

Montgomery Court



OVERVIEW

Montgomery Court is one of the finest houses in South West England which has been in the Montgomery family for 100 years. Steeped in history, the house dates back 700 years to 1300 and has been in the hands of several families. It first started as a medieval hall built by de Moels and the original magnificent roof trusses are visible in several of the rooms today. In the 1580s the large Elizabethan mansion was built by Sir Francis Hastings after leasing the building from his brother, the Earl of Huntingdon. The Bennett family purchased the house in the 1760s in which time they added the ballroom and the very attractive Georgian south façade.

It is now available to rent exclusively as a beautiful venue for weddings and parties sleeping up to 80 guests with use of the spectacular Ballroom and the North Hall, or simply as a luxurious venue for family holidays with plenty of rooms to relax in and take in the lovely countryside views.

Set in rolling countryside on the borders of Somerset, Dorset and Wiltshire, with good access to Yeovil, Bath and Salisbury, and just 2 hours from London, it is in a fabulous location.

All the rooms on the estate have undergone a major refurbishment and redecoration with exquisite designs inspired by artist Binny Matthews and interior designer Pip Scaramanga.



HOUSE PARTY SOLUTIONS

Montgomery Court

YOUR STAY

Number accommodated

- ◆ The Court: 41-50 guests or up to 57 with use of the East Wing
- ◆ The Coach House: 4 self-contained Coach House Cottages that can accommodate a total of 30 guests are available outside the gates of the Main House.

Number of bedrooms

- ◆ The Court: 21 bedrooms
- ◆ East Wing Flat: 4 bedrooms
- ◆ Yacht Club: 1 bedroom + sofa bed
- ◆ The Coach House: 16 bedrooms

The Court: Bedroom & bathroom configuration

First floor:

- ◆ 9 bedrooms: 7x doubles (all king size), 2x twins (4 of these rooms can be arranged as family suites)
- ◆ 7 bathrooms: 6x en-suites and 1x family bathroom

Second floor:

- ◆ 12 bedrooms: 10x doubles (6 of which are king size), 1x twin and 1x single
- ◆ 12 bathrooms: 11x en-suites and 1 x bathroom

The Coach House: Bedroom & bathroom configuration

- ◆ The Carriage House: 4 en-suite bedrooms (one Super King bedroom on the ground floor, two King Size bedrooms on the first floor and a further bedroom with a Super King/Twin beds, a double Sofa Bed is also included in the living area on the ground floor)
- ◆ The Stables: 4 en-suite bedrooms (one Super King/Twin bedroom on the ground floor, one further Super King Size bedroom on the ground floor, one Super King bedroom on the first floor and another bedroom with one Single bed)
- ◆ The Horse Stalls: 4 en-suite bedrooms (one Super King bedroom on the ground floor, two King Size bedrooms on the first floor and another bedroom with one Single bed)
- ◆ The Tack Room: 4 en-suite bedrooms (one Super King bedroom on the ground floor, two King Size bedrooms on the first floor and a further bedroom with a Super King/Twin beds)

Please note: configuration lists for both shared and single occupancy, can be provided on request

Dining capacity

- ◆ North Hall: House furniture available to seat 50 guests but can sit up to 80 for formal dining using hired furniture
- ◆ Kitchen: Table to seat 6
- ◆ Ballroom: Can seat up to 150 for a celebration meal

Catering

- ◆ Catering can be arranged - please contact us with your requirements.

Facilities

- ◆ TV room/ playroom
- ◆ Tennis courts, lawn and hardcourt
- ◆ Wi-Fi
- ◆ Fully equipped gym
- ◆ Ballroom with grand piano
- ◆ Library
- ◆ Morning room
- ◆ Games room with full size snooker table
- ◆ Large informal grounds which can be used for a range of activities
- ◆ Office
- ◆ 3 hold golf course around the Courts private lake with the first tee from the roof!
- ◆ Lift to all floors
- ◆ Indoor heated swimming pool, jacuzzi and sauna
- ◆ Working fireplaces

Check in/out times

- ◆ Check in at 12pm and check out at 2pm.
- ◆ Coach House times may differ from the Court

Pets

- ◆ By prior agreement only.

Disabled facilities

- ◆ There is a lift that services all three floors and a bedroom on the first floor suitable for disabled guests.



HOUSE PARTY SOLUTIONS

Montgomery Court

YOUR STAY (cont.)

Weddings

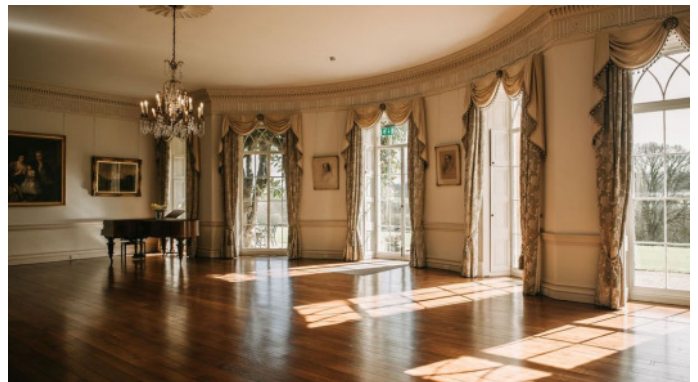
- ◆ You can get married in the court or in the local church, St Michael's, which is right next door and seats 300 people.
- ◆ The court is available to rent for a wedding for three days either at a weekend or during the week.
- ◆ 10 hours planning time with an experienced Event Manager to help plan your dream wedding.
- ◆ A full list of trusted local preferred suppliers including caterers, florists, entertainment
- ◆ No corkage charge
- ◆ No restriction on end time in basement disco
- ◆ Space for marquees for larger events.
- ◆ Master bedroom can be used as a bridal suite and up to 38 family members and friends can stay in the remaining rooms in the house.
- ◆ House is licensed for civil weddings and civil ceremonies where up to 150 people can be seated in the North Hall. Several beautiful spaces outdoors for ceremonies including a Garden Gazebo and a Lake Gazebo

Corporate facilities

- ◆ Corporate events can be arranged- with rooms arrangements and equipment to suit the event. Projector and screen on site
- ◆ Ballroom and North Hall can be used for big presentations and there are several smaller rooms which can be used for breakout meetings
- ◆ Great local suppliers who can provide entertainment and team building activities

Other services offered (additional charge)

- ◆ Private chef/ catering
- ◆ Housekeeping
- ◆ Music
- ◆ Entertainment
- ◆ On-site activities
- ◆ Local Staff who can provide services such as bar work, waiting staff, cooked and continental breakfasts





HOUSE PARTY SOLUTIONS

Montgomery Court

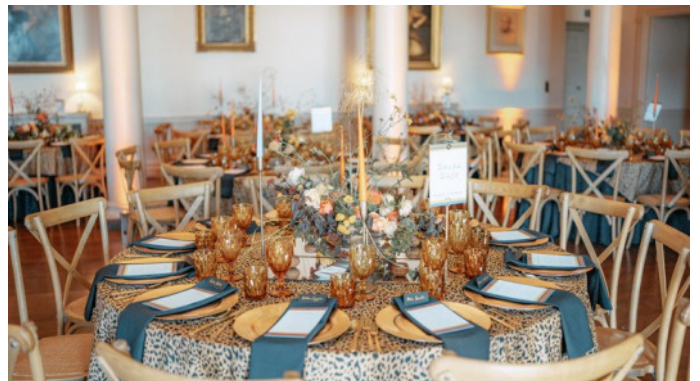
ACTIVITIES

On-Site Activities

- ◆ Clay pigeon shooting
- ◆ Croquet
- ◆ Three hole golf course with the first tee from the roof!
- ◆ Indoor heated swimming pool, jacuzzi and sauna
- ◆ Lawn and hardcourt tennis courts
- ◆ Fully equipped gym
- ◆ Falconry
- ◆ Walking
- ◆ Flying microlight
- ◆ Team building and corporate events

Local Attractions

- ◆ Visit the most visited heritage site in the UK- Stonehenge
- ◆ Go shopping and see the fine architecture in Bath
- ◆ Visit the Safari Park at Longleat
- ◆ Go hot-air ballooning from Sherborne over the Dorset countryside
- ◆ Visit the medieval buildings in the beautiful town of Sherborne
- ◆ Go go-karting, fishing or golfing all nearby to the hall
- ◆ Visit Tudor manor house Barrington Court
- ◆ Go to Wookey Hole - home of the infamous Wookey witch
- ◆ Visit the world-famous 18th century landscape gardens of Stourhead House





HOUSE PARTY SOLUTIONS

Montgomery Court

LOCATION

Montgomery Court is set just off the A303 on the borders of Somerset, Dorset and Wiltshire near the village of North Cadbury. It overlooks what many people believe to be King Arthur's Camelot Hill Fort.

Distance from:

- ◆ London - 2.25 hours (Train in 1 1/2 hours)
- ◆ Bristol - 1 hour
- ◆ Manchester - 3.75 hours
- ◆ Leeds - 4.25 hours

Nearest airports:

- ◆ Bristol Airport - 1 hour

Nearest railway stations:

- ◆ Fast train connections to London, with two stations within 10 miles of North Cadbury Court.
- ◆ London Paddington to Castle Cary (1 hr 39 mins journey) - 5 miles / 15 minutes in a taxi
- ◆ London Waterloo Templecombe (2 hr 7 mins journey) - 9 miles

Distance to nearest village:

- ◆ North Cadbury - 2 min walk

Distance to nearest towns:

- ◆ Bruton - 15 mins
- ◆ Yeovil - 20 mins
- ◆ Sherborne - 20 mins





HOUSE PARTY SOLUTIONS

Montgomery Court

FLOOR PLAN





HOUSE PARTY SOLUTIONS

Montgomery Court



PRICES

The whole Estate can provide accommodation for up to 82 guests in double rooms or 42 guests, if single occupancy is required.

The Main House has 21 bedrooms, sleeping up to 43 adults or 21 guests on a single occupancy basis.

- ◆ 9x occasional beds are available at a cost of £60 per stay
- ◆ 4x cots are also available at £25 per stay

Please see a breakdown of the additional Estate accommodation below:

The Coach House: 16 bedrooms sleeping up to 30 guests across 4 self-contained Coach House Cottages - situated just outside of the gates to the main house:

- ◆ 2x Cottage's sleeping 8 guests - £1,450 for a minimum 2 night stay. Additional nights are charged at £650 per night
- ◆ 2x Cottages sleeping 7 guests - £1,340 for a minimum 2 night stay. Additional nights are charged at £600 per night
- ◆ The Coach House rental includes a continental breakfast hamper

East Wing: 4 bedrooms sleeping 7 guests; 3 small double rooms & a 1 single room, kitchen and 2 bathrooms - £475 per night

Yacht Club: Rental includes use of the Yacht Club building & pavillion. A King size bedroom is also available at a cost of £175 per night

Camping:

- ◆ 15 guests are welcome to camp in the walled garden at a cost of £40 per person, per stay
- ◆ Camping for larger groups at the Lakeside/Yacht Club by arrangement - please enquire for further information based on your intended number

Main House only

Weekend

- ◆ 3 days & 2 nights (Friday-Sunday): From £15,850 during low season, increasing up to £23,000 during peak season
- ◆ Check in from 12pm on Friday
- ◆ Check out by 2pm on Sunday with bedrooms cleared by 1pm
- ◆ Minimum stay of 3 nights applies over the bank holiday weekends
- ◆ Please enquire for a cost to add additional nights
- ◆ Prices include VAT



HOUSE PARTY SOLUTIONS

Montgomery Court

Midweek

- ◆ 3 days & 2 nights: From £10,350 during low season, increasing to £14,650 during peak season
- ◆ Please enquire if you require additional nights
- ◆ 1 night stays possible during select months or where there is last minute availability - please enquire

The Estate

Weekend

- ◆ TBC

Midweek

- ◆ 2 days & 1 night (checking in on a Monday, Tuesday or Wednesday): From £8,500 (January & February), £9,100 (March & November) & £9,650 (December)
- ◆ Midweek breaks are not available from April - October
- ◆ Stays can be extended for an additional £4,000 per night
- ◆ Prices include VAT

Weekly

- ◆ Stays are on a 7 day, 6 night basis
- ◆ January & February: From £26,200
- ◆ March & November: From £29,150
- ◆ April, October & December: From £31,550
- ◆ May & September: From £34,600
- ◆ June, July & August; From £37,650
- ◆ Stays can be extended for an additional £4,000 per night
- ◆ Prices include VAT
- ◆ Rentals do not include House Staff or catering, this is to arranged separately when booking your stay

Christmas & New Year

- ◆ Christmas: please enquire
- ◆ New Year: please enquire



HOUSE PARTY SOLUTIONS

Montgomery Court

Function fee

- ◆ For stays involving a wedding or party there will be a function fee added to the rental prices to cover operational costs. This gives you 10 hours of pre-event planning with an experienced events manager and onsite support from their house management team. It also covers essentials such as commercial kitchen access for your caterers, linen hire, a fridge trailer and coordination of your deliveries and collection
- ◆ Up to 50 guests: £600 (includes evening manager only) up to 80 guests: £1,700, up to 100 guests: £2,200, up to 150 guests: £2,700, 150 plus guests: £3,700
- ◆ Additional planning can be arranged at £35 per hour

Booking terms

- ◆ Please enquire for information on Montgomery Courts booking terms





HOUSE PARTY SOLUTIONS

Montgomery Court

