



HOUSE PARTY SOLUTIONS



# Albright Lodge

Shropshire

SLEEPS 14 - 19



- ◆ Tennis court
- ◆ Perfectly situated Hot Tub beyond the gated private garden, boasting stunning views across the rolling Shropshire hills. Bluetooth speakers and mood lighting reflect every atmosphere
- ◆ Award winning Italianate gardens
- ◆ Cinema room just off the main hallway
- ◆ 7 individually styled bedrooms many with immaculate en-suites and others sharing vast beautiful family bathrooms
- ◆ Situated near the beautiful town of Shrewsbury with many highly recommended eateries, walks and attractions
- ◆ Sleeps 14 to 19 adults
- ◆ Spectacular views over the Shropshire countryside to Long Mountain
- ◆ Lovely entertaining rooms with a bright and airy Orangery dining room
- ◆ All 7 bedrooms welcome guests with amenities - Hair dryer, kettle, coffee and tea alongside welcome bars of Moser Roth chocolate
- ◆ Purpose built yoga studio on-site





HOUSE PARTY SOLUTIONS

## Albright Lodge



### OVERVIEW

When it comes to getting away from all the hustle and bustle, Albright Lodge has to be up there with the best when it comes to being a truly impressive, pristine and welcoming home-from-home in the countryside. Not dissimilar to a boutique hotel, this property will undoubtedly surpass even the highest of expectations. With all the amenities you could wish for on your doorstep, the choice is endless; relax, indulge, enjoy - leave reeling from a wealth of wonderful memories and batteries fully recharged!

This Victorian Hunting Lodge lovingly blends the warmth and elegance of its original features with a mix of contemporary interiors and 20th century luxuries. The owners have thought of everything when it comes to those little extras that make all the difference; coffee and tea making facilities in every room with Moser Roth chocolates, Cole & Lewis bathroom products, TV in every bedroom, iPod docking stations, quality linen, sumptuous furnishings and white fluffy towels. And if that wasn't already enough, tantalise your taste buds with a delicious homemade cake on arrival washed down with a glass of Prosecco before you head for the hot tub, tennis court or enjoy a book in one of the many nooks indoors...or out.

The house is south facing, flooded with natural light and has views to die for over beautifully manicured, award winning Italianate gardens towards rolling farmland and Long Mountain beyond. If you feel the need to head down the private gated drive, there is oodles to do to keep everybody amused. Whether it's country pursuits that float your boat, shopping or dining out in the picturesque market town of Shrewsbury or simply a catered culinary delight 'at

Albright Lodge is our family home and the warmest of welcomes is guaranteed. We hope that you will feel relaxed in a calm but chic environment where you can enjoy yourselves and not feel on tenterhooks.

The house has been furnished and designed with comfort in mind, this is not a show home but a place for you to enjoy with family and friends, as we do ourselves.

There is lots to do in the area if you enjoy outdoor activities, great shopping in Shrewsbury, a health club a few minutes away but equally Albright is just a great venue to unwind, relax and spend time with friends over a bottle of wine.

We can leave you to be self sufficient or we can offer many extras such as a quiz to get everybody involved to a delicious ready prepared supper that you can heat up yourselves on arrival if you wish. All of our ingredients are locally sourced and we consider ourselves to be accomplished cooks.

Really, nothing is too much trouble so please just ask and we'll try our best to help or point you in the right direction.



HOUSE PARTY SOLUTIONS

## Albright Lodge

### YOUR STAY

#### <span>Number accommodated</span>

- ◆ 14 - 19 adults

#### <span>Bedroom & bathroom configuration</span>

7 bedrooms 3 of which en-suite. The 4 remaining bedrooms share large family bathrooms, please see below for full layout.

- ◆ All bedrooms come provided with welcome Moser Roth chocolates. A hairdryer and kettle alongside coffee, tea, sugar and milk.
- ◆ All bathrooms come provided with Cole & Lewis hand wash, body lotion, shampoo, shower gel and conditioner. Cotton wool pads, towels, spare loo rolls and bottled drinking water.

#### Coach House downstairs

- ◆ Bathroom upon entering the Coach House with - Toilet, sink, overhead rain shower, slipper bath and all amenities listed above.
- ◆ Through to the downstairs twin room sleeping 2 guests with wardrobe, mirror, bedside table with provided tissues.
- ◆ Upstairs finds a stunning loft conversion with white leather corner sofa, flexible mounted TV, all amenities listed above and of course a beautiful king size bed sleeping 2.

#### The Main House 2nd floor

- ◆ Bedroom 1 - King size zip & link sleeping 2 guests, with an additional stunning King size day bed sleeping 2 guests offering all amenities listed above. Seating area under the curved windows with a lovely table, wardrobe and chest of drawers. Robes provided for use of the private bathroom located a few steps from the room with toilet, sink, overhead rain head shower and all amenities listed above.
- ◆ Bedroom 2 - Set King size bed sleeping 2 guests with wardrobe, TV, desk and en-suite bathroom with double rain head shower, toilet, vanity basin and all amenities listed above.
- ◆ Bedroom 3 - 4 poster bed sleeping 2 guests with personal TV, King Size day bed sleeping 2 guests, wardrobes, music system and en-suite bathroom with double rain had shower, toilet, sink and all amenities listed above.

#### The Main House 3rd floor

- ◆ Bedroom 1 - Set King size bed sleeping 2 guests. TV, desk and music system. En-suite bathroom with double rain head shower sink, toilet and all amenities listed above.
- ◆ Bedroom 2 - Double set bed sleeping 2 guests with desk, TV, chest of drawers and all amenities listed above.
- ◆ Day bed on landing sleeping 1 guests.
- ◆ Family bathroom shared by guests using day bed and bedroom 2. Walk in double rain head shower, toilet, vanity basin and huge double person bath.

#### <span>Dining capacity</span>

- ◆ Kitchen - Seats 4 people
- ◆ Dining room, Orangery - Seats up to 20 people
- ◆ Alfresco - Seats 14 people

#### <span>Kitchen</span>

- ◆ Large spacious kitchen definitely the heart of the Lodge. Boasting a double range master cooker with overhead Smeg extractor, large fridge freezer and of course cutlery, crockery and everything needed for catering over 20 guests in true style.

#### <span>Catering</span>

- ◆ Hired on a self catered basis however local recommended caterers can be provided
- ◆ The owners can leave a fully prepared dinner left for guests to enjoy on arrival, bake homemade cakes or simply prepare any form of pre-prepared food desired.

#### <span>Facilities</span>

- ◆ Tennis court
- ◆ Hot Tub with lighting and bluetooth speakers
- ◆ Cinema room
- ◆ Board games and chess located throughout the house
- ◆ Office space if required
- ◆ Table tennis situated near the garden
- ◆ Walled garden near tennis court with a tranquil area offering a hammock fixed between the beautiful trees
- ◆ A purpose built yoga and dance studio
- ◆ Silent disco can be provided

#### <span>Check in/out times</span>

- ◆ Check in and out times are flexible



HOUSE PARTY SOLUTIONS

## Albright Lodge

### YOUR STAY (cont.)

#### **<span>Pets</span>**

- ◆ Dogs are welcome by prior arrangement - no charge but they must be kept downstairs.
- ◆ Horses can be brought and stabled next door - cost on application.

#### **<span>Disabled facilities</span>**

- ◆ There are steps leading to the property however, once in the house the coach house's downstairs twin room can be reached with only 2 steps on route. The ground floor is almost completely level and therefore can provide a pleasant stay all guests.
- ◆ Please enquire for more information on the access at Albright Lodge

#### **<span>Weddings</span>**

- ◆ No license but there is a beautiful church in the hamlet with catering available at the house. Wedding parties up to 60 can be catered for under a marquee in the grounds.
- ◆ Please contact us to discuss your requirements.

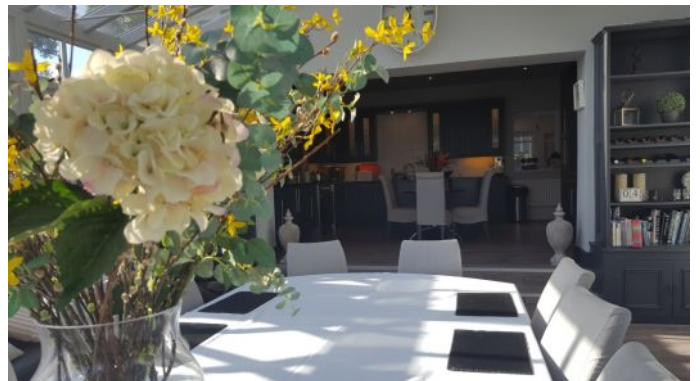
#### **<span>Stag and Hen parties</span>**

- ◆ Sophisticated stag and hen parties welcome

#### **<span>Other services offered</span>**

##### **<span>(At an additional charge:)</span>**

- ◆ Housekeeping
- ◆ Prepared meals
- ◆ Beauty therapists
- ◆ Driver
- ◆ Babysitting
- ◆ Wine tasting
- ◆ Magician
- ◆ Butler in the buff







HOUSE PARTY SOLUTIONS

## Albright Lodge

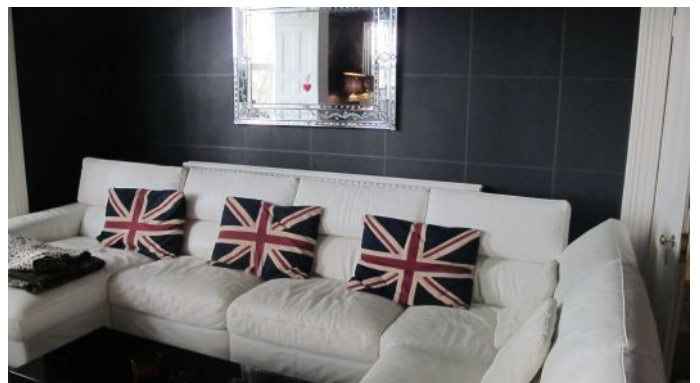
### ACTIVITIES

#### **<span>On-Site Activities</span>**

- ◆ Hot tub
- ◆ A purpose built yoga and dance studio, perfect for guests wishing to partake in group activities without leaving home. A trained Yoga & Pilates instructor can be provided, there is also a TV with DVD's available if you would rather hold a class yourselves
- ◆ Beauty treatments
- ◆ Wine tasting
- ◆ Magician
- ◆ Tennis
- ◆ Butler in the buff
- ◆ Table tennis
- ◆ Cinema room
- ◆ Boards games and chess

#### **<span>Local Attractions</span>**

- ◆ Excellent shopping in quaint city of Shrewsbury
- ◆ Horse riding
- ◆ Visit the dramatic medieval Powis Castle and Gardens
- ◆ Perfect surroundings for local country walks and visiting the village pubs
- ◆ Enjoy clay pigeon shooting, quad biking, canoeing and paintballing - all a short distance from the lodge
- ◆ Visit the beautiful town of Chester
- ◆ The atmospheric Attingham Park and its beautiful grounds
- ◆ Enjoy a game of golf - only a 5 minute drive away from the lodge





HOUSE PARTY SOLUTIONS

## Albright Lodge

### LOCATION

Albright Lodge is set in a rural location but only 9 miles from the historic market town of Shrewsbury with over 200 individual shops and boutiques, bars and restaurants. The house has spectacular views over the Shropshire countryside to Long Mountain and the grounds feature an award winning Italianate garden.

Albright Lodge can be reach from London via train in under 2.5 hours. The owners can then arrange transport from Shrewsbury station to the Lodge.

#### **<span>Distance from:</span>**

- ◆ London - 3 hours
- ◆ Bristol - 2.25 hours
- ◆ Manchester - 1.75 hours
- ◆ Leeds - 2.25 hours

#### **<span>Nearest airports:</span>**

- ◆ Birmingham - 1.25 hours
- ◆ Liverpool - 1.5 hours
- ◆ Manchester - 1.5 hours

#### **<span>Nearest railway stations:</span>**

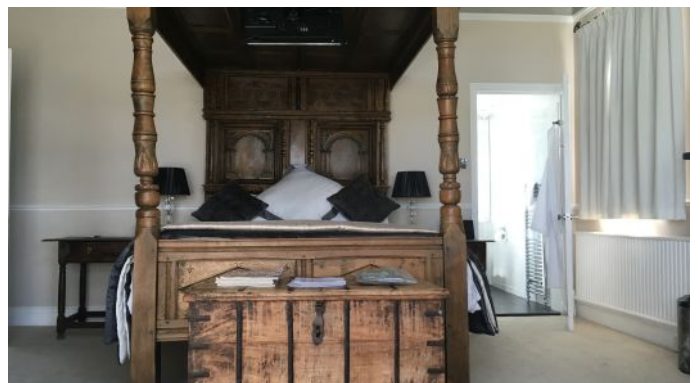
- ◆ Shrewsbury - 20 mins
- ◆ Welshpool - 15 mins

#### **<span>Distance to nearest village:</span>**

- ◆ Welshpool - 15 mins

#### **<span>Distance to nearest town:</span>**

- ◆ Shrewsbury - 20 mins





HOUSE PARTY SOLUTIONS

## Albright Lodge

### FLOOR PLAN







HOUSE PARTY SOLUTIONS

## Albright Lodge



### PRICES

2024/25 Low season - January, February, March, October, November & December High season - April, May, June, July, August & September

#### Weekend

Low season

- ◆ 2 nights - £3,000
- ◆ 3 nights - £3,150

High season

- ◆ 2 nights £3,750
- ◆ 3 nights £4,050

#### Midweek

- ◆ Low season bookings priced from £3,100
- ◆ High season bookings priced from £3,750

#### Weekly

- ◆ Low season bookings priced at £3,750
- ◆ High season bookings priced at £5,250

#### Christmas & New Year

- ◆ Christmas & New Year 2024/25 - week priced at £6,750

### <span>Booking Terms</span>

- ◆ 30% deposit balance due to secure your booking
- ◆ Remaining balance due 60 days prior to arrival
- ◆ Damages deposit: £1,000







HOUSE PARTY SOLUTIONS

## Albright Lodge

